

AdminStudio 2019 R2

Release Notes

August 2019

Introduction	3
New Features in AdminStudio 2019 R2	3
Package Feed Module	3
Package Feed Module PowerShell Cmdlets	4
Support for Windows 10 - 1903	5
Test Selection Wizard.....	6
Analyze Tab.....	6
Reports Tab	8
New Features in AdminStudio 2019.....	11
Windows 10 Continuous Compatibility	12
Test Selection Wizard.....	12
Analyze Tab.....	12
Reports Tab	14
MSIX - Automated Batch Conversion	19
Digital Signing of MSIX Package	20
Testing MSIX Package in Remote Machine.....	21
New PowerShell Cmdlets	21
InstallShield 2019.....	22
Editions.....	22
System Requirements	29
Compatibility Summary	29
AdminStudio Machine	34
Distribution Systems	35
Application Catalog Database Server	36
AdminStudio Enterprise Server / Workflow Manager Server	37
Automated Application Converter	38
Virtual Machine Requirements	38
Virtual Technology Requirements.....	42
Downloading AdminStudio Installers	42

AdminStudio 2019 R2 Evaluation Restrictions	43
Resolved Issues.....	43
AdminStudio 2019 R2.....	43
AdminStudio 2019	43
Known Issues.....	45
Legal Information	46

Introduction

AdminStudio is the starting point for any software's Operating System Compatibility Assessment, Risk Assessment, Deployments, Updates, New Releases, New Applications, and Windows 10 migrations. More than a packaging tool, AdminStudio arms your IT team with a complete application readiness solution, enabling you to identify and mitigate issues before pulling the deployment trigger. No more surprises.

With AdminStudio, you can:

- Improve service quality and streamline service delivery
- Decrease risk and embrace new technologies faster
- Eliminate mobile application security and compatibility concerns
- Reliably prepare and deploy application virtualization formats
- Integrate seamlessly with leading software deployment systems
- Simplify and unify application management with standardized processes
- Boost efficiency with a central application repository
- Identify application packaging issues in minutes instead of days

New Features in AdminStudio 2019 R2

This section lists the new features that are included in AdminStudio 2019 R2:

- [Package Feed Module](#)
- [Package Feed Module PowerShell Cmdlets](#)
- [Support for Windows 10 - 1903](#)

Package Feed Module



Edition • The Package Feed Module requires an additional subscription with AdminStudio Enterprise and Professional Editions

In AdminStudio 2019 R2, you can download and import an application to your application catalogue using the Package Feed Module. You can find the new feature in the **Import >> Import using Package Feed Module**

The AdminStudio Package Feed Module can save countless hours by leveraging a curated setup database covering thousands of products. This helps you to more quickly add new applications to the AdminStudio application catalog. From here you can generate reports, wrap it with a script template you have created, and pass it off to any of the several popular deployment solutions to which integration is provided.

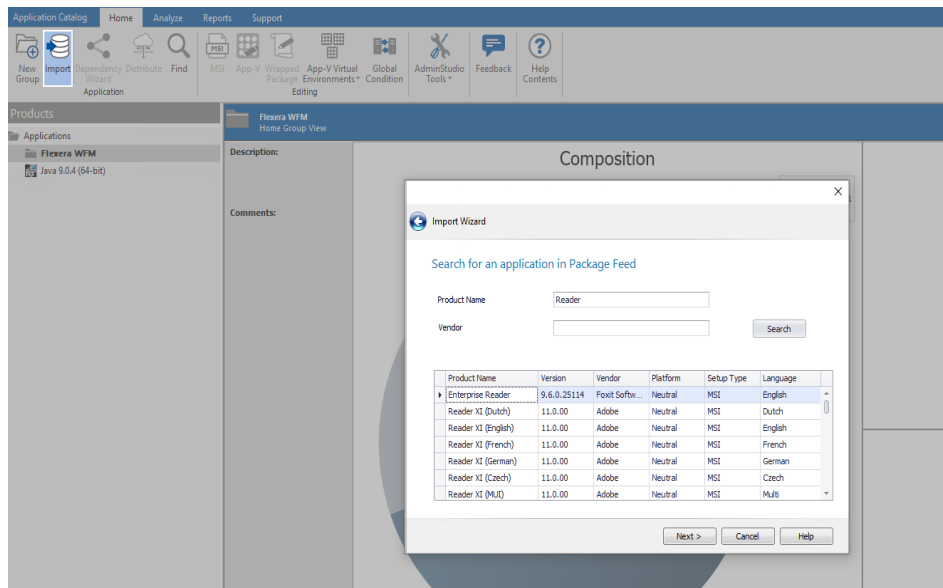
The **Package Feed Module** helps you to do the following:

- Download and import the latest version of a product
- Identifying the silent installation parameters for the particular version of the product



Note • Silent installation parameters available in the **Package Feed Module** are validated and ready to use

To learn more about the **Package Feed Module**, [click here](#).



To download and import an application using the **Package Feed Module** the below subsequent wizard appears:

- **Source Panel** - Select **Import using Package Feed Module** option
- **Search for an application in Package Feed Panel** - Search by Product Name and/or Vendor and select the required application
- **Provide Vendor Setup file Panel** - You can download the selected setup file provided by the vendor or Browse for the setup file to import using the Browse drop down
- **Silent Command Line Arguments Panel** - You can use or edit the vendor provided Install Command line as per your requirements
- **Destination Group Panel** - You can select a group or add new group into which you want to import the application
- **Summary Panel** - You can review the information in the Summary panel about the options selected in the previous panels.
- **Running the Import** - you can see the import progress and finish the import process on successful completion.

Package Feed Module PowerShell Cmdlets



Edition • Package Feed Module PowerShell cmdlets are available only for users subscribed for the Package Feed Module with AdminStudio Enterprise Edition

In AdminStudio 2019 R2, the below PowerShell cmdlets are added to download and import an application using the Package Feed Module:

- **Invoke-ASPackageFeedSync** - Synchronizes the package feed data, so the entries in the Package Feed Module is always up to date
- **Invoke-ASPackageFeedSearch** - Searches for an application in the Package Feed Module based on Product Name and Version supplied
- **Get-ASPackageFeedDetails** - Fetches the details of an application like Silent command line switches, file name, etc.
- **Invoke-ASPackageFeedDownload** - Downloads the setup file to the configured download path

Existing PowerShell cmdlets extended support for Package Feed Module

- **Set-ASOptionProperty** - Configures the download path for the setup file to be downloaded from the Package Feed Module
- **Get-ASOptionProperty** - Fetches the download path where the setup file is downloaded from the Package Feed Module
- **Invoke-ASImportPackage** - Imports the downloaded application to the application catalog

Support for Windows 10 - 1903

In AdminStudio 2019 R2, application's compatibility against Windows 10-1903 can be tested in the following:

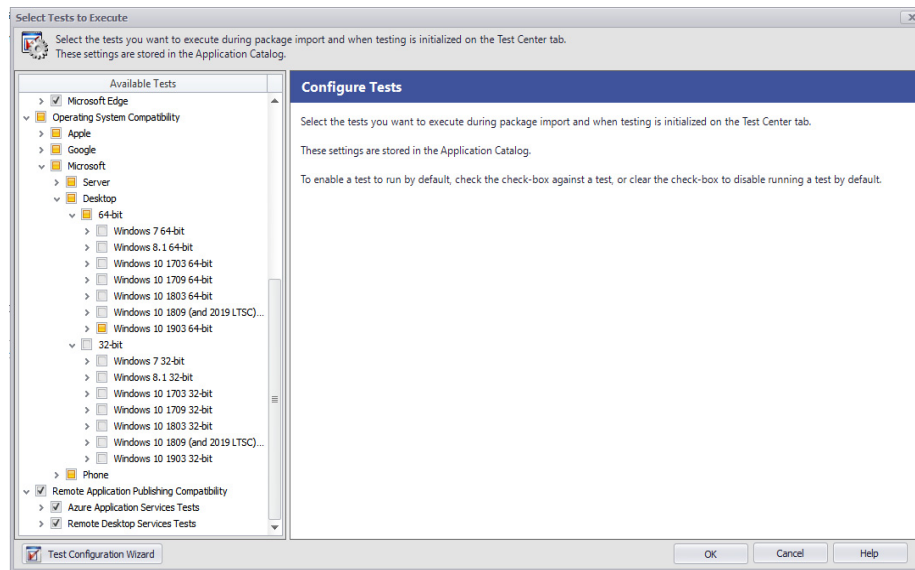
- [Test Selection Wizard](#)
- [Analyze Tab](#)
- [Reports Tab](#)



Note • AdminStudio 2019 R2 stop supporting for Windows 10 1607 Build

Test Selection Wizard

In AdminStudio 2019 R2, you can select Windows 10-1903 build in the Test selection wizard to test the operating system compatibility.

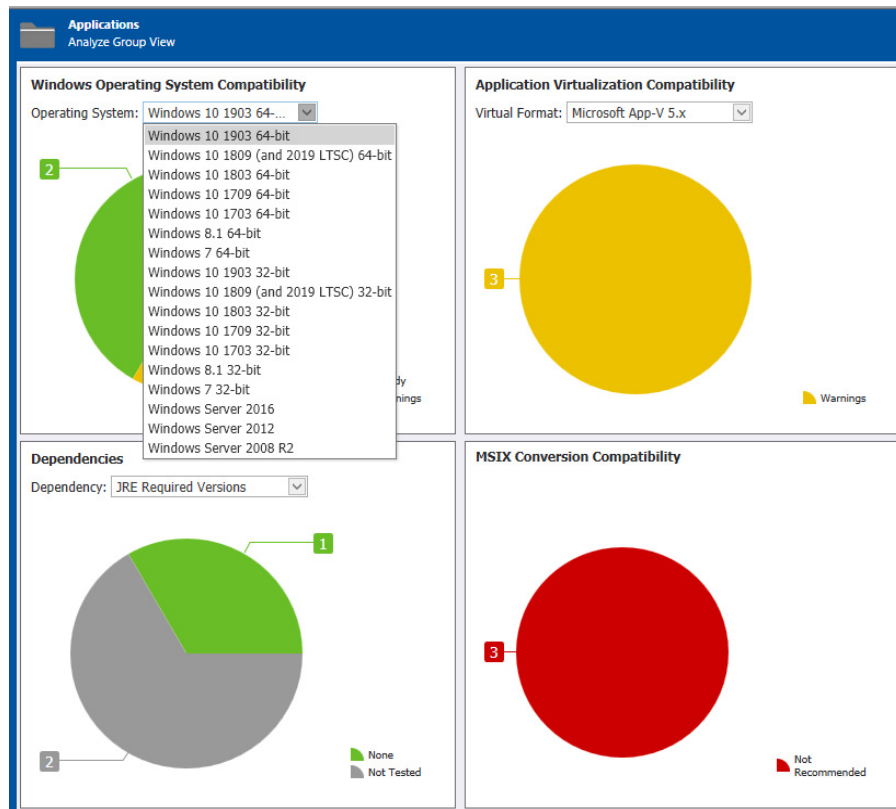


Analyze Tab

In AdminStudio 2019 R2, you can view the operating system compatibility details for Windows 10-1903 in the following places:

Chart View

In AdminStudio 2019 R2, you can select Windows 10-1903 in the operating system compatibility chart view.



Summary View

In AdminStudio 2019 R2, you can view the package summary for Windows 10-1903 in the operating system compatibility tab.

Supportability Risks	
Summary	
Test Category	Overall Assessment
Operating System Compatibility	⚠️
Windows 10 1903 32-bit	●
Windows 10 1809 (and 2019 LTSC) 32-bit	●
Windows 10 1803 32-bit	●
Windows 10 1709 32-bit	●
Windows 10 1703 32-bit	●
Windows 8.1 32-bit	●
Windows 7 32-bit	●
Windows 10 1903 64-bit	⚠️
Windows 10 1809 (and 2019 LTSC) 64-bit	●
Windows 10 1803 64-bit	●
Windows 10 1709 64-bit	●
Windows 10 1703 64-bit	●
Windows 8.1 64-bit	●
Windows 7 64-bit	●
Windows Server 2016	⚠️
Windows Server 2012	⚠️
Windows Server 2008 R2	●
MSIX Conversion Compatibility	❌
Desktop	❌
Application Virtualization Compatibility	❌
Microsoft App-V 4.x	●
Microsoft App-V 5.x	⚠️
VMware ThinApp 4.x	●
VMware ThinApp 5.x	❌

Detail View

In AdminStudio 2019 R2, you can view the result summary for Windows 10-1903 in the operating system compatibility tab.

Supportability Risks		
Windows 10 1903 64-bit		
<div> <div>53</div> <div>Tests Executed</div> <div>4</div> <div>Errors</div> <div>14</div> <div>Warnings</div> <div>0</div> <div>Issues Suppressed</div> <div>14</div> <div>Total</div> <div>0</div> <div>Auto-Fix Available</div> </div>		
Severity	Message	
Warning	5104 - Immediate Execution System-Context Custom Actions: The Windows Installer database is scanned for the presence of any non-impersonated custom actions which are not scheduled to run in the script (deferred execution).	Count: 1
Warning	5105 - Deferred Execution Custom Action Context: The Windows Installer database is scanned for the presence of any deferred execution custom actions that are not running in system context.	Count: 1
Warning	5120 - Standard User Changes (User Account Control): The Windows Installer database is scanned for the presence of .exe files (other than installers/updaters) that cause the User Account Control (UAC) prompt to be displayed.	Count: 2
Warning	5122 - Deprecated API Calls: The Windows Installer database is scanned for references to deprecated API calls. Scanned file extensions are: exe, dll, sys, src, dir, qpl, oxc.	Count: 8
Warning	5148 - Reboot Pending Launch Condition: The Windows Installer database is scanned for the absence of launch conditions that prevent the installation from continuing when a restart is pending.	Count: 1
Warning	5149 - AdminUser or Privileged Launch Condition: The Windows Installer database is scanned for the presence of LaunchConditions that use either AdminUser or Privileged properties and may prevent installation on Windows 10 1903.	Count: 1

Reports Tab

In AdminStudio 2019 R2, you can see the operating system compatibility for Windows 10-1903 in the following reports:

Application Readiness Dashboard Report

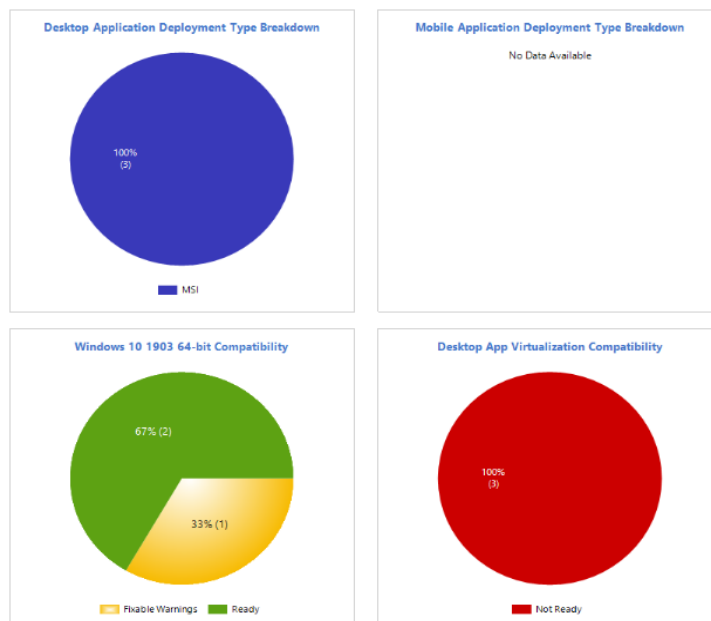
In AdminStudio 2019 R2, you can see the operating system compatibility for Windows 10-1903 in Application Readiness Dashboard report.

Application Readiness Dashboard

Catalog Name: test_package
Application: 2
Groups: 1

This report shows the deployment type breakdown of the applications in your Application Catalog as well as results of operating system and virtualization compatibility testing for desktop applications. It also shows the results of Windows Installer and App-V best practice testing.

Note: To open more detailed reports, click on categories in the charts below.

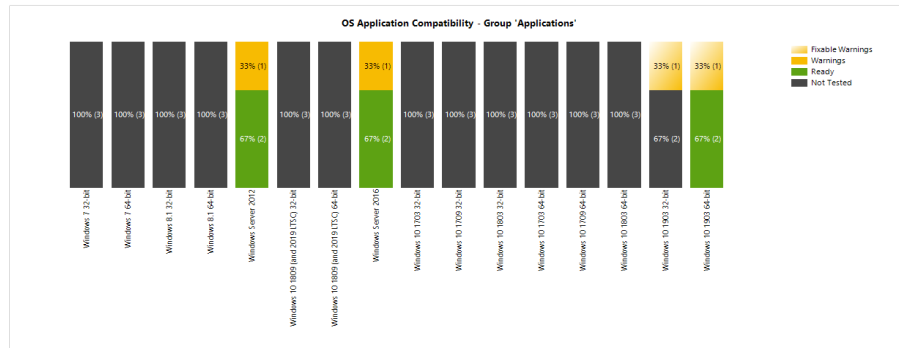


Operating System Compatibility Group Dashboard Report

In AdminStudio 2019 R2, you can see the overall status of operating system application compatibility testing for group applications containing 5 packages in **Operating System Compatibility Group Dashboard** Report.

Operating System Application Compatibility

This report shows the overall status of operating system application compatibility testing for group 'Applications' containing 3 packages . Each segment shows the number of packages in its status category.



Overall Package Testing Results Report

In AdminStudio 2019 R2, you can see the overall test results for Windows installer packages for Windows 10-1903 in **Overall Package Testing Results Report**.

Overall Test Results for Windows Installer Packages

In this report, an icon indicates the test status of each Windows installer package in the Application Catalog for all Test Center test categories including OS compatibility, application virtualization compatibility, Windows installer best practices, and conflict testing. Click on a row to see historical information for a package.

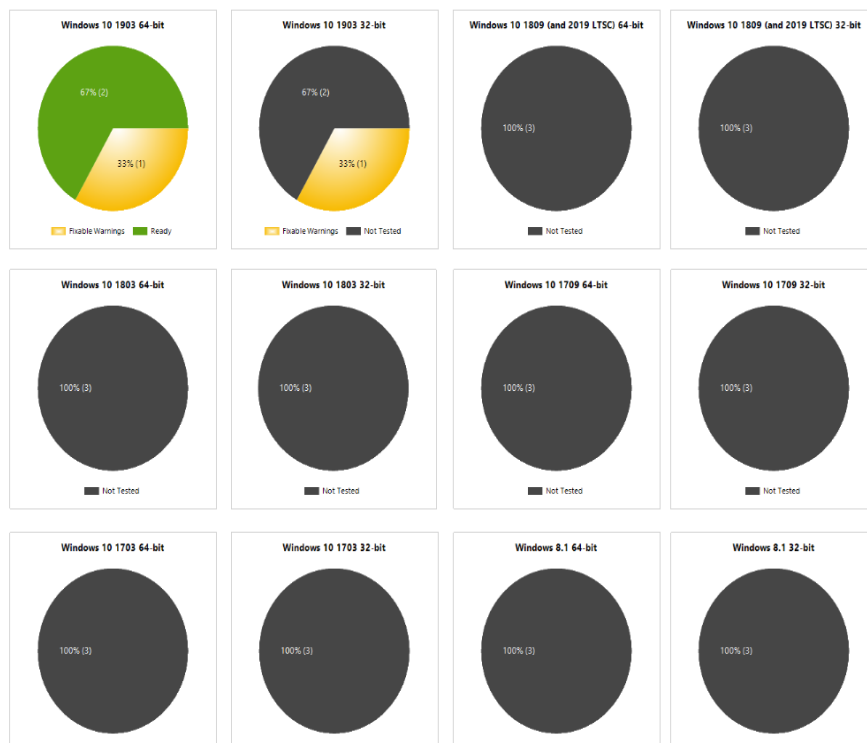
Single Name	Windows 10 1803/19H1	Windows 10 1809/19H2	Windows 10 20H1/20H2	Windows 10 20H2/21H1	Windows 10 21H1/21H2	Windows 10 21H2/22H1	Windows 10 22H1/22H2	Windows 10 22H2/23H1	Windows 10 23H1/23H2	Windows 10 23H2/24H1	Windows 10 24H1/24H2	Windows 10 24H2/25H1	Windows 10 25H1/25H2	Windows 10 25H2/26H1	Windows 10 26H1/26H2	Windows 10 26H2/27H1	Windows 10 27H1/27H2	Windows 10 27H2/28H1	Windows 10 28H1/28H2	Windows 10 28H2/29H1	Windows 10 29H1/29H2	Windows 10 29H2/30H1	Windows 10 30H1/30H2	Windows 10 30H2/31H1	Windows 10 31H1/31H2	Windows 10 31H2/32H1	Windows 10 32H1/32H2	Windows 10 32H2/33H1	Windows 10 33H1/33H2	Windows 10 33H2/34H1	Windows 10 34H1/34H2	Windows 10 34H2/35H1	Windows 10 35H1/35H2	Windows 10 35H2/36H1	Windows 10 36H1/36H2	Windows 10 36H2/37H1	Windows 10 37H1/37H2	Windows 10 37H2/38H1	Windows 10 38H1/38H2	Windows 10 38H2/39H1	Windows 10 39H1/39H2	Windows 10 39H2/40H1	Windows 10 40H1/40H2	Windows 10 40H2/41H1	Windows 10 41H1/41H2	Windows 10 41H2/42H1	Windows 10 42H1/42H2	Windows 10 42H2/43H1	Windows 10 43H1/43H2	Windows 10 43H2/44H1	Windows 10 44H1/44H2	Windows 10 44H2/45H1	Windows 10 45H1/45H2	Windows 10 45H2/46H1	Windows 10 46H1/46H2	Windows 10 46H2/47H1	Windows 10 47H1/47H2	Windows 10 47H2/48H1	Windows 10 48H1/48H2	Windows 10 48H2/49H1	Windows 10 49H1/49H2	Windows 10 49H2/50H1	Windows 10 50H1/50H2	Windows 10 50H2/51H1	Windows 10 51H1/51H2	Windows 10 51H2/52H1	Windows 10 52H1/52H2	Windows 10 52H2/53H1	Windows 10 53H1/53H2	Windows 10 53H2/54H1	Windows 10 54H1/54H2	Windows 10 54H2/55H1	Windows 10 55H1/55H2	Windows 10 55H2/56H1	Windows 10 56H1/56H2	Windows 10 56H2/57H1	Windows 10 57H1/57H2	Windows 10 57H2/58H1	Windows 10 58H1/58H2	Windows 10 58H2/59H1	Windows 10 59H1/59H2	Windows 10 59H2/60H1	Windows 10 60H1/60H2	Windows 10 60H2/61H1	Windows 10 61H1/61H2	Windows 10 61H2/62H1	Windows 10 62H1/62H2	Windows 10 62H2/63H1	Windows 10 63H1/63H2	Windows 10 63H2/64H1	Windows 10 64H1/64H2	Windows 10 64H2/65H1	Windows 10 65H1/65H2	Windows 10 65H2/66H1	Windows 10 66H1/66H2	Windows 10 66H2/67H1	Windows 10 67H1/67H2	Windows 10 67H2/68H1	Windows 10 68H1/68H2	Windows 10 68H2/69H1	Windows 10 69H1/69H2	Windows 10 69H2/70H1	Windows 10 70H1/70H2	Windows 10 70H2/71H1	Windows 10 71H1/71H2	Windows 10 71H2/72H1	Windows 10 72H1/72H2	Windows 10 72H2/73H1	Windows 10 73H1/73H2	Windows 10 73H2/74H1	Windows 10 74H1/74H2	Windows 10 74H2/75H1	Windows 10 75H1/75H2	Windows 10 75H2/76H1	Windows 10 76H1/76H2	Windows 10 76H2/77H1	Windows 10 77H1/77H2	Windows 10 77H2/78H1	Windows 10 78H1/78H2	Windows 10 78H2/79H1	Windows 10 79H1/79H2	Windows 10 79H2/80H1	Windows 10 80H1/80H2	Windows 10 80H2/81H1	Windows 10 81H1/81H2	Windows 10 81H2/82H1	Windows 10 82H1/82H2	Windows 10 82H2/83H1	Windows 10 83H1/83H2	Windows 10 83H2/84H1	Windows 10 84H1/84H2	Windows 10 84H2/85H1	Windows 10 85H1/85H2	Windows 10 85H2/86H1	Windows 10 86H1/86H2	Windows 10 86H2/87H1	Windows 10 87H1/87H2	Windows 10 87H2/88H1	Windows 10 88H1/88H2	Windows 10 88H2/89H1	Windows 10 89H1/89H2	Windows 10 89H2/90H1	Windows 10 90H1/90H2	Windows 10 90H2/91H1	Windows 10 91H1/91H2	Windows 10 91H2/92H1	Windows 10 92H1/92H2	Windows 10 92H2/93H1	Windows 10 93H1/93H2	Windows 10 93H2/94H1	Windows 10 94H1/94H2	Windows 10 94H2/95H1	Windows 10 95H1/95H2	Windows 10 95H2/96H1	Windows 10 96H1/96H2	Windows 10 96H2/97H1	Windows 10 97H1/97H2	Windows 10 97H2/98H1	Windows 10 98H1/98H2	Windows 10 98H2/99H1	Windows 10 99H1/99H2	Windows 10 99H2/100H1	Windows 10 100H1/100H2	Windows 10 100H2/101H1	Windows 10 101H1/101H2	Windows 10 101H2/102H1	Windows 10 102H1/102H2	Windows 10 102H2/103H1	Windows 10 103H1/103H2	Windows 10 103H2/104H1	Windows 10 104H1/104H2	Windows 10 104H2/105H1	Windows 10 105H1/105H2	Windows 10 105H2/106H1	Windows 10 106H1/106H2	Windows 10 106H2/107H1	Windows 10 107H1/107H2	Windows 10 107H2/108H1	Windows 10 108H1/108H2	Windows 10 108H2/109H1	Windows 10 109H1/109H2	Windows 10 109H2/110H1	Windows 10 110H1/110H2	Windows 10 110H2/111H1	Windows 10 111H1/111H2	Windows 10 111H2/112H1	Windows 10 112H1/112H2	Windows 10 112H2/113H1	Windows 10 113H1/113H2	Windows 10 113H2/114H1	Windows 10 114H1/114H2	Windows 10 114H2/115H1	Windows 10 115H1/115H2	Windows 10 115H2/116H1	Windows 10 116H1/116H2	Windows 10 116H2/117H1	Windows 10 117H1/117H2	Windows 10 117H2/118H1	Windows 10 118H1/118H2	Windows 10 118H2/119H1
-------------	-------------------------	-------------------------	-------------------------	-------------------------	-------------------------	-------------------------	-------------------------	-------------------------	-------------------------	-------------------------	-------------------------	-------------------------	-------------------------	-------------------------	-------------------------	-------------------------	-------------------------	-------------------------	-------------------------	-------------------------	-------------------------	-------------------------	-------------------------	-------------------------	-------------------------	-------------------------	-------------------------	-------------------------	-------------------------	-------------------------	-------------------------	-------------------------	-------------------------	-------------------------	-------------------------	-------------------------	-------------------------	-------------------------	-------------------------	-------------------------	-------------------------	-------------------------	-------------------------	-------------------------	-------------------------	-------------------------	-------------------------	-------------------------	-------------------------	-------------------------	-------------------------	-------------------------	-------------------------	-------------------------	-------------------------	-------------------------	-------------------------	-------------------------	-------------------------	-------------------------	-------------------------	-------------------------	-------------------------	-------------------------	-------------------------	-------------------------	-------------------------	-------------------------	-------------------------	-------------------------	-------------------------	-------------------------	-------------------------	-------------------------	-------------------------	-------------------------	-------------------------	-------------------------	-------------------------	-------------------------	-------------------------	-------------------------	-------------------------	-------------------------	-------------------------	-------------------------	-------------------------	-------------------------	-------------------------	-------------------------	-------------------------	-------------------------	-------------------------	-------------------------	-------------------------	-------------------------	-------------------------	-------------------------	-------------------------	-------------------------	-------------------------	-------------------------	-------------------------	-------------------------	-------------------------	-------------------------	-------------------------	-------------------------	-------------------------	-------------------------	-------------------------	-------------------------	-------------------------	-------------------------	-------------------------	-------------------------	-------------------------	-------------------------	-------------------------	-------------------------	-------------------------	-------------------------	-------------------------	-------------------------	-------------------------	-------------------------	-------------------------	-------------------------	-------------------------	-------------------------	-------------------------	-------------------------	-------------------------	-------------------------	-------------------------	-------------------------	-------------------------	-------------------------	-------------------------	-------------------------	-------------------------	-------------------------	-------------------------	-------------------------	-------------------------	-------------------------	-------------------------	-------------------------	-------------------------	-------------------------	-------------------------	-------------------------	-------------------------	-------------------------	-------------------------	-------------------------	-------------------------	-------------------------	-------------------------	-------------------------	-------------------------	--------------------------	---------------------------	---------------------------	---------------------------	---------------------------	---------------------------	---------------------------	---------------------------	---------------------------	---------------------------	---------------------------	---------------------------	---------------------------	---------------------------	---------------------------	---------------------------	---------------------------	---------------------------	---------------------------	---------------------------	---------------------------	---------------------------	---------------------------	---------------------------	---------------------------	---------------------------	---------------------------	---------------------------	---------------------------	---------------------------	---------------------------	---------------------------	---------------------------	---------------------------	---------------------------	---------------------------	---------------------------	---------------------------	---------------------------

Windows Desktop OS Compatibility Dashboard Report

In AdminStudio 2019 R2, you can see the compatibility issues in pie chart format for Windows 10-1903 in **Windows Desktop OS Compatibility Dashboard Report**.

Operating System Application Compatibility

This report shows the overall status of operating system application compatibility testing for each operating system. Each slice shows the number of packages in a status category. To see a list of the packages in a specific status category, click on that slice.

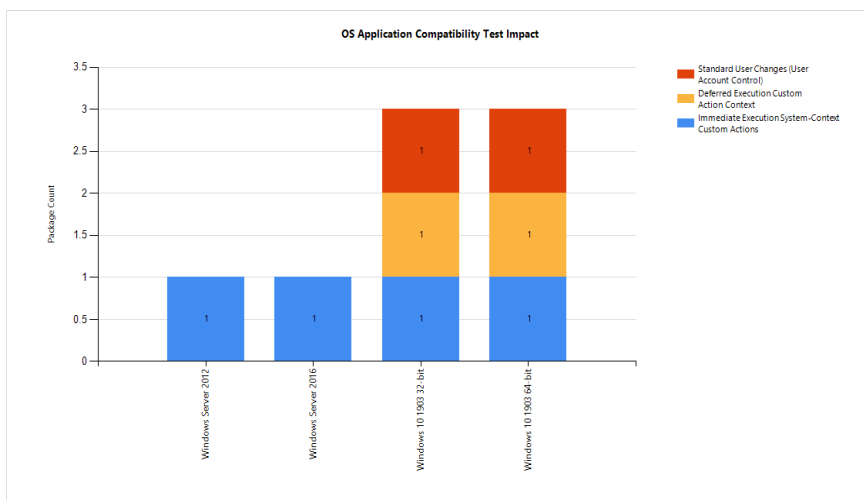


Test Impact Report

In AdminStudio 2019 R2, you can see the reports of three OS compatibility tests for Windows 10-1903 in **Operating System Compatibility by Test Impact Report**.

Operating System Compatibility By Test Impact

This report shows the top 3 OS compatibility tests that have detected issues in the most packages. Click on the chart to see more detailed information for a specific operating system.

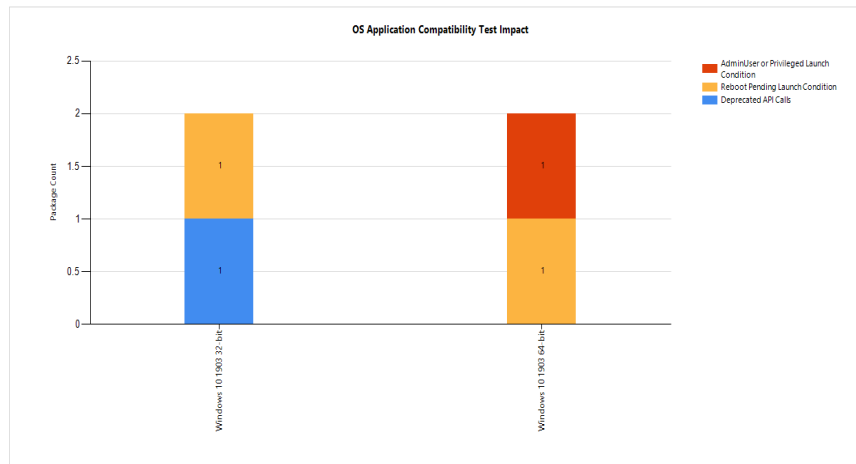


Test Suppression Report

In AdminStudio 2019 R2, you can see the Windows 10-1903 for three tests that have been suppressed in **Operating System Compatibility by Test Suppression Report**.

Operating System Compatibility Test Suppression Report

This report shows the top 3 tests that have been suppressed for the most packages. Click on the chart to see more detailed information for specific operating systems.

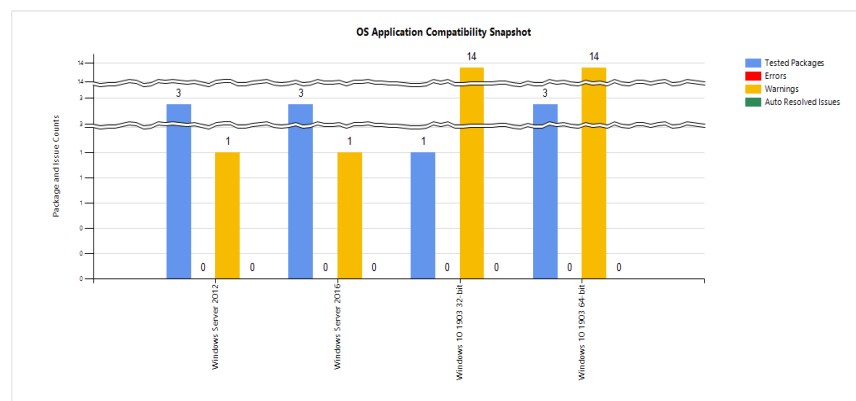


Snapshot Analysis Report

In AdminStudio 2019 R2, you can see the compatibility testing error and warning for Windows 10-1903 in **Operating System Compatibility Snapshot Analysis Report**.

Operating System Application Compatibility Snapshot Analysis

This report shows the total operating system application compatibility testing error and warning status. Click on the chart to view historical snapshots for the selected operating system.



New Features in AdminStudio 2019

This section lists the new features that are included in AdminStudio 2019:

- **Windows 10 Continuous Compatibility**
- **MSIX - Automated Batch Conversion**

- [New PowerShell Cmdlets](#)

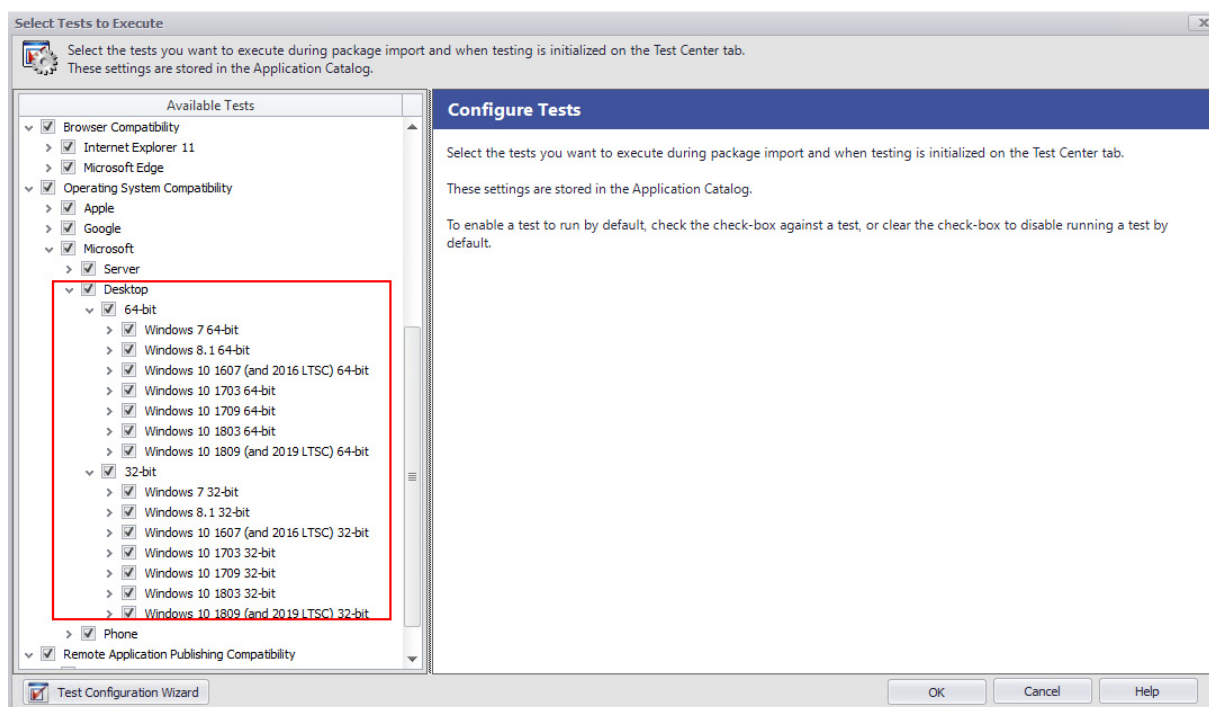
Windows 10 Continuous Compatibility

In AdminStudio 2019, application's compatibility against each specific version of Windows 10 can be tested.

- [Test Selection Wizard](#)
- [Analyze Tab](#)
- [Reports Tab](#)

Test Selection Wizard

In AdminStudio 2019, you can select one or more versions of Windows 10 in the Test selection wizard to test the operating system compatibility.



Analyze Tab

In AdminStudio 2019, you can view the operating system compatibility details for different versions of Windows 10 in the following places:

Chart View

In AdminStudio 2019, you can select different versions of Windows 10 in the operating system compatibility chart view.



Summary View

In AdminStudio 2019, you can view the package summary for different versions of Windows 10 in the operating system compatibility tab.

The screenshot shows the AdminStudio 2019 interface. The top navigation bar includes 'Application Catalog', 'Home', 'Analyze', 'Reports', and 'Support'. Below this is a toolbar with icons for 'Execute Tests', 'Launch Wizard', 'Conflict Web Test', 'Resolve Issues', 'Stop', 'Select Tests to Execute', and 'Help Contents Support'. The left sidebar is titled 'Products' and lists various applications under 'Applications' and 'Sales' categories. 'AVG Anti-Virus (v1.0)' is selected. The main pane shows the 'AVG Anti-Virus' product details, including 'Analyze Deployment Type View' and 'Supportability Risks'. A 'Summary' section contains a table titled 'Operating System Compatibility'.

Test Category	Overall Assessment
Operating System Compatibility	✗
Windows 10(1809) 32-bit	✗
Windows 10(1803) 32-bit	✗
Windows 10(1709) 32-bit	⚠
Windows 10(1703) 32-bit	⚠
Windows 10(1607) 32-bit	⚠
Windows 8.1 32-bit	⚠
Windows 7 32-bit	✓
Windows 10(1809) 64-bit	✗
Windows 10(1803) 64-bit	✗
Windows 10(1709) 64-bit	✗
Windows 10(1703) 64-bit	✗
Windows 10(1607) 64-bit	✗
Windows 8.1 64-bit	⚠
Windows 7 64-bit	✓
Windows Server 2016	✗
Windows Server 2012	✗
Windows Server 2008 R2	✓

Reports Tab

In AdminStudio 2019, you can see the operating system compatibility for different versions of Windows 10 in the following reports:

Application Readiness Dashboard Report

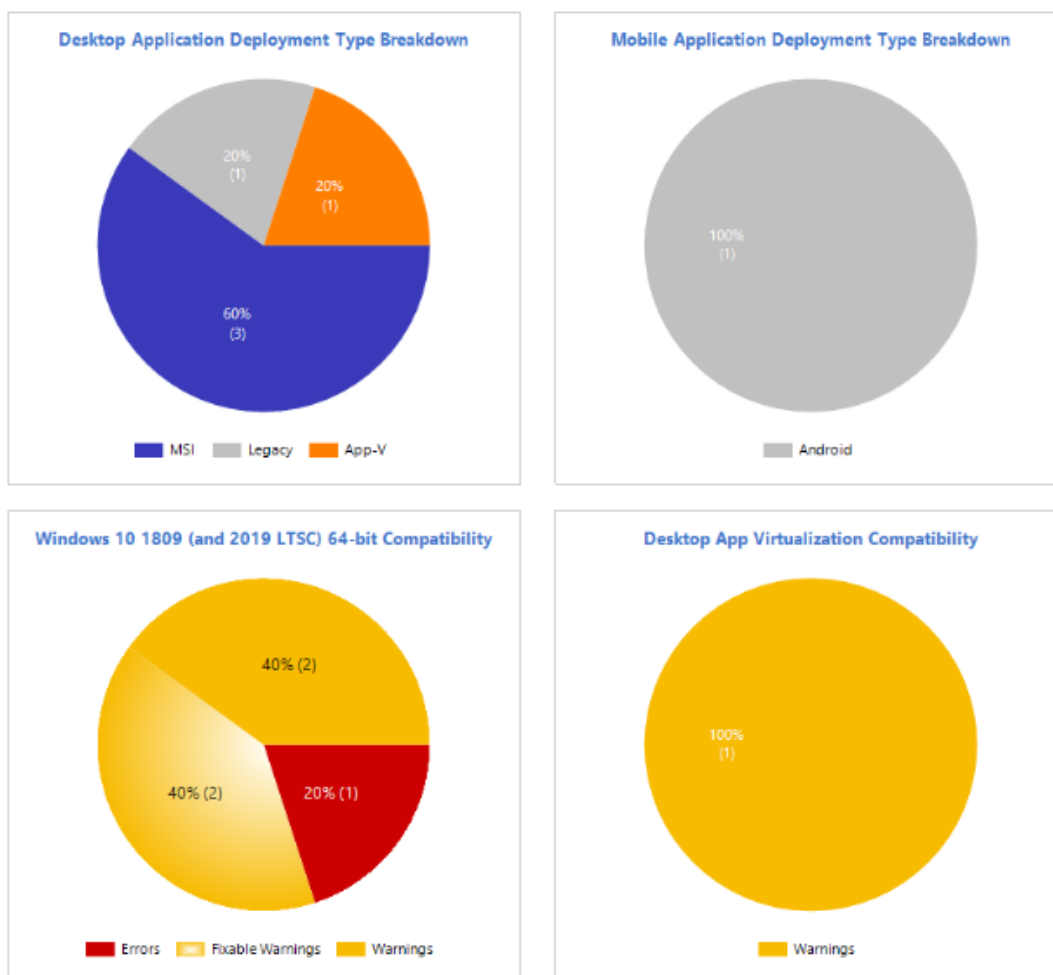
In AdminStudio 2019, you can see the operating system compatibility for different versions of Windows 10 in Application Readiness Dashboard report.

Application Readiness Dashboard

Catalog Name: April-2-2019
 Applications: 6
 Groups: 1

This report shows the deployment type breakdown of the applications in your Application Catalog as well as results of operating system and virtualization compatibility testing for desktop applications. It also shows the results of Windows Installer and App-V best practice testing.

Note: To open more detailed reports, click on categories in the charts below.



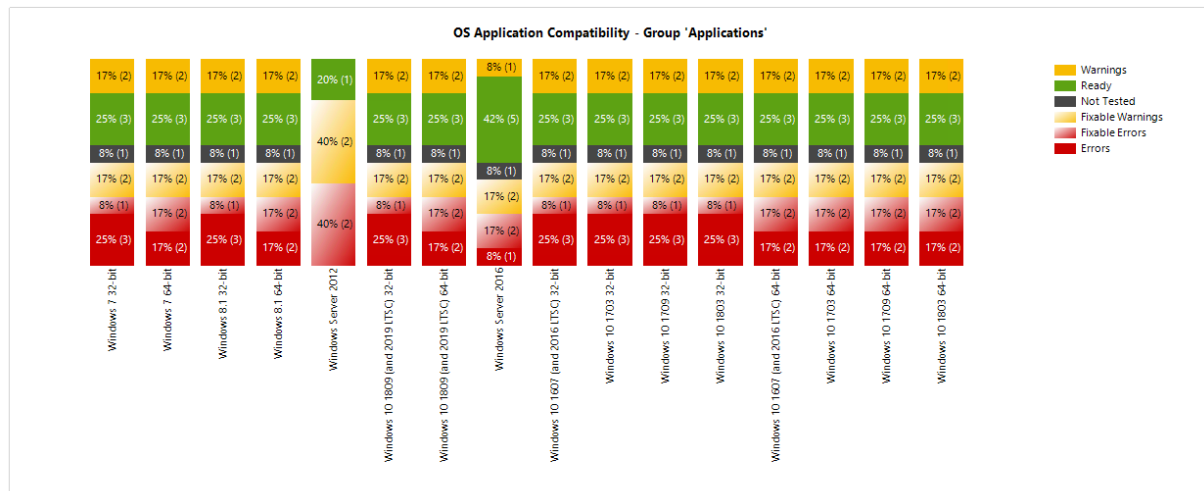
Operating System Compatibility Group Dashboard Report

In AdminStudio 2019, you can see the overall status of operating system application compatibility testing for group applications containing 5 packages in **Operating System Compatibility Group Dashboard Report**.

AdminStudio®

Operating System Application Compatibility

This report shows the overall status of operating system application compatibility testing for group 'Applications' containing 5 packages. Each segment shows the number of packages in its status category.



Detailed Compatibility Results

In AdminStudio 2019, you can click on the **OS Application Compatibility - Group Application** chart to drill down to the detailed compatibility results.

AdminStudio®



Windows 10 1607 (and 2016 LTSC) 64-bit Compatibility Results - Fixable Warnings Group 'Applications'

This report lists the packages for which automatically fixable warnings were found. It shows the warning count including how many of them are automatically fixable.

Package Name	Product Version	Warnings	Fixable Warnings	Fixed Errors	Fixed Warnings
Orca	3.1.3790.0000	16	3	0	0
Network Provider Order setting to standard 1.0 MUL 1.0.0	1.0	4	3	0	0

Overall Package Testing Results Report

In AdminStudio 2019, you can see the overall test results for Windows installer packages for different versions of Windows 10 in **Overall Package Testing Results Report**.

Overall Test Results for Windows Installer Packages

In this report, an icon indicates the test status of each Windows Installer package in the Application Catalog for all Test Center test categories, including OS compatibility, application virtualization compatibility, Windows Installer best practices, and conflict testing. Click on a row to see historical information for a package.

Package Name	Windows 10 1809 (and 2019 LTSC) 64-bit	Windows 10 1809 (and 2019 LTSC) 32-bit	Windows 10 1803 64-bit	Windows 10 1803 32-bit	Windows 10 1709 64-bit	Windows 10 1709 32-bit	Windows 10 1703 64-bit	Windows 10 1703 32-bit	Windows 10 1607 (and 2016 LTSC) 64-bit	Windows 10 1607 (and 2016 LTSC) 32-bit	Windows 8.1 64-bit	Windows 8.1 32-bit	Windows 7 64-bit	Windows 7 32-bit	Windows 2012	Windows 2016	Microsoft App-V 4	Microsoft App-V 5	VMware ThinApp 5	VMware ThinApp 3	Citrix XenApp	Server App-V	Remote Desktop
7-Zip 9.20 (64 edition)	⚠️	❌	⚠️	❌	⚠️	❌	⚠️	❌	⚠️	❌	⚠️	❌	⚠️	❌	⚠️	⚠️	⚠️	⚠️	⚠️	⚠️	⚠️	⚠️	⚠️
BlackBerry	❌	⚠️	❌	⚠️	❌	⚠️	❌	⚠️	❌	⚠️	❌	⚠️	❌	⚠️	⚠️	⚠️	⚠️	⚠️	⚠️	⚠️	⚠️	⚠️	⚠️
ActivePerl Build 018	⚠️	⚠️	⚠️	⚠️	⚠️	⚠️	⚠️	⚠️	⚠️	⚠️	⚠️	⚠️	⚠️	⚠️	⚠️	⚠️	⚠️	⚠️	⚠️	⚠️	⚠️	⚠️	⚠️

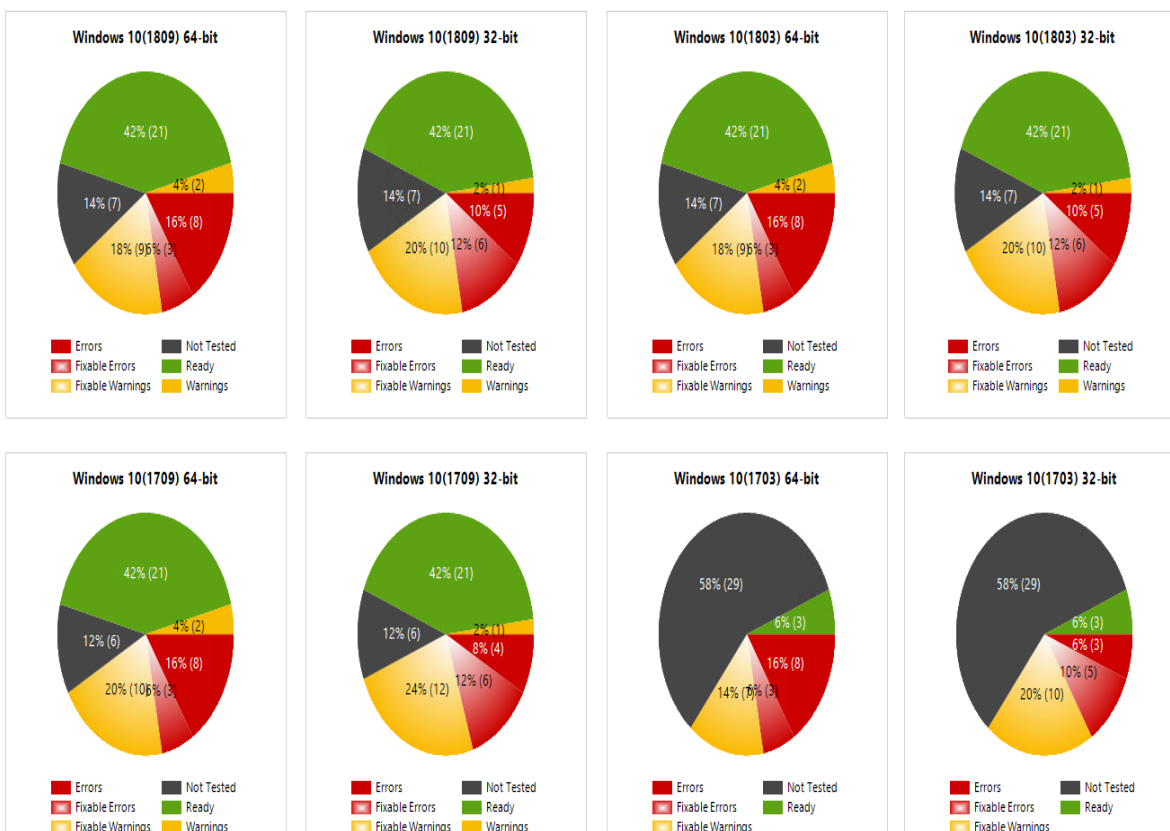
Windows Desktop OS Compatibility Dashboard Report

In AdminStudio 2019, you can see the compatibility issues in pie chart format for different versions of Windows 10 in **Windows Desktop OS Compatibility Dashboard Report**.

AdminStudio®

Operating System Application Compatibility

This report shows the overall status of operating system application compatibility testing for each operating system. Each slice shows the number of packages in a status category. To see a list of the packages in a specific status category, click on that slice.

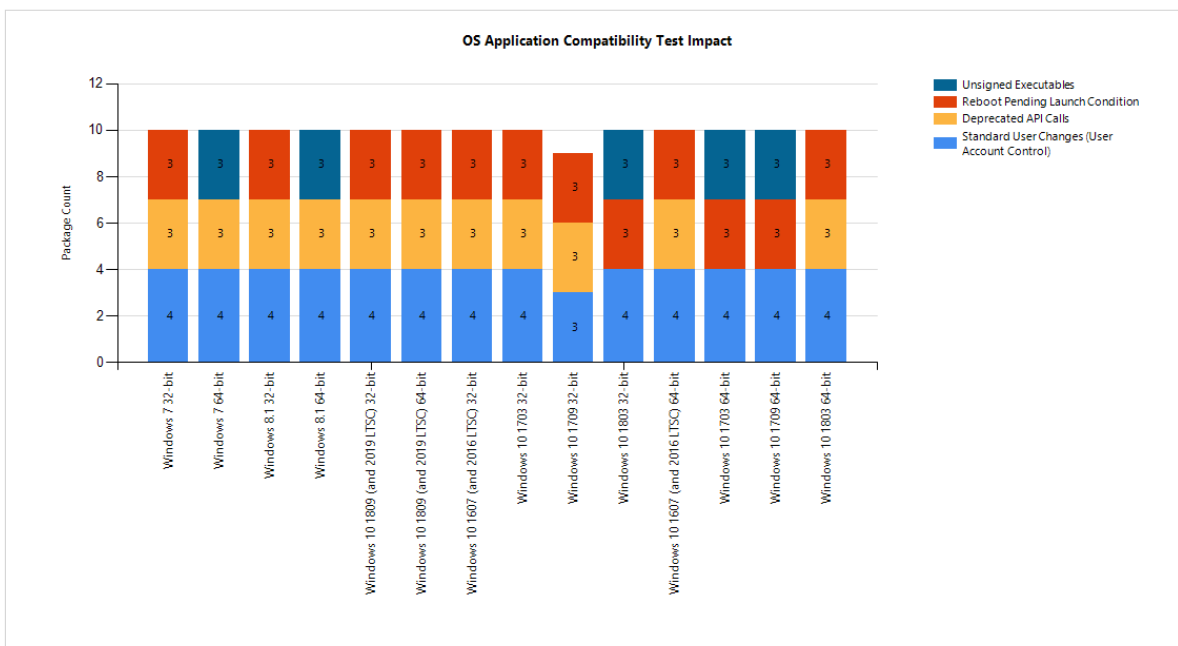


Test Impact Report

In AdminStudio 2019, you can see the reports of three OS compatibility tests for different versions of Windows 10 in **Operating System Compatibility by Test Impact Report**.

Operating System Compatibility By Test Impact

This report shows the top 3 OS compatibility tests that have detected issues in the most packages. Click on the chart to see more detailed information for a specific operating system.

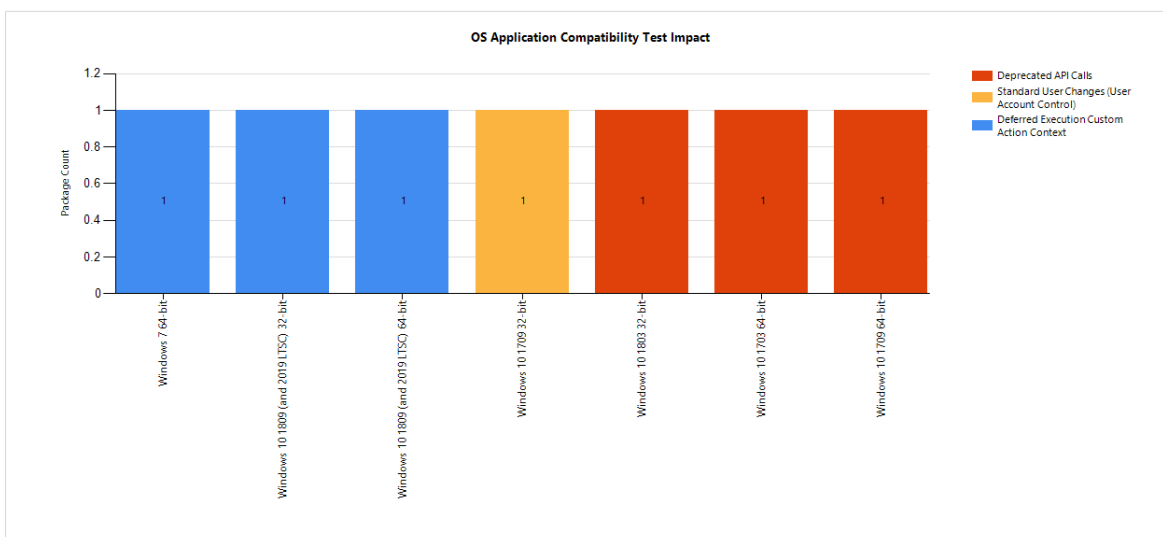


Test Suppression Report

In AdminStudio 2019, you can see the different versions of Windows 10 for three tests that have been suppressed in **Operating System Compatibility by Test Suppression Report**.

Operating System Compatibility Test Suppression Report

This report shows the top 3 tests that have been suppressed for the most packages. Click on the chart to see more detailed information for specific operating systems.

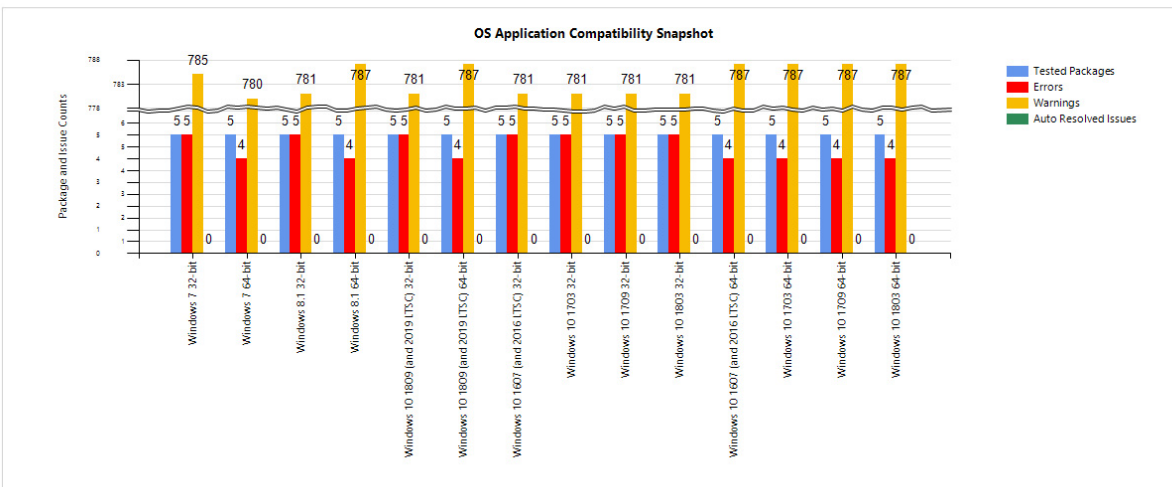


Snapshot Analysis Report

In AdminStudio 2019, you can see the compatibility testing error and warning for different versions of Windows 10 in **Operating System Compatibility Snapshot Analysis Report**.

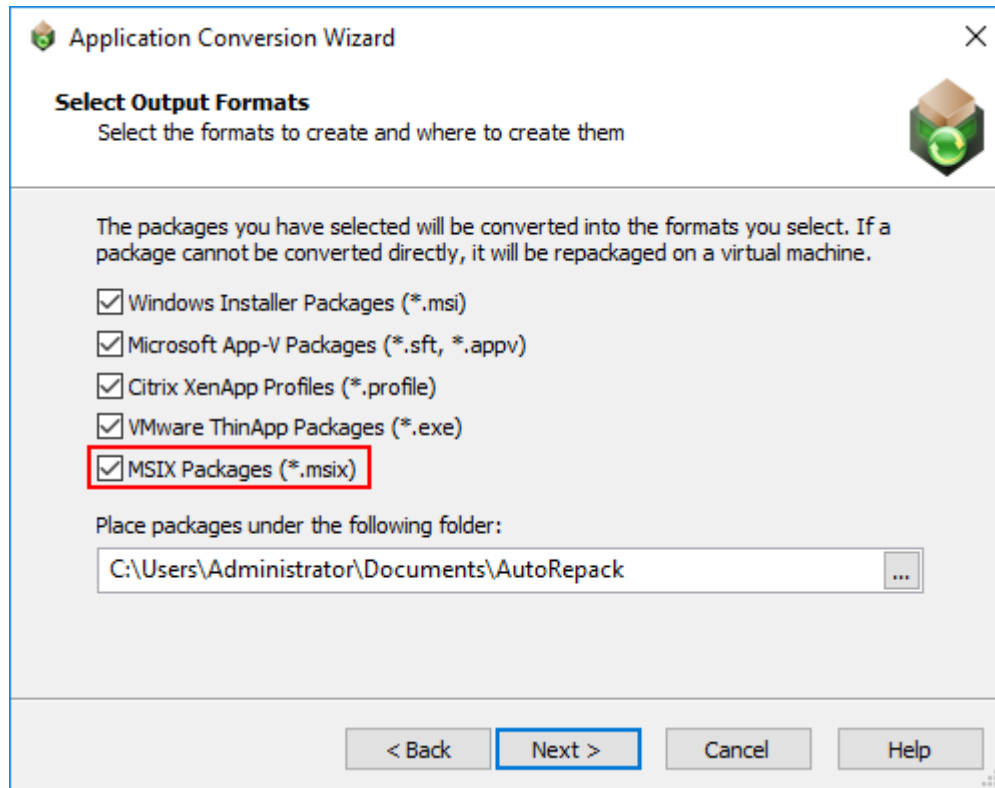
Operating System Application Compatibility Snapshot Analysis

This report shows the total operating system application compatibility testing error and warning status. Click on the chart to view historical snapshots for the selected operating system.



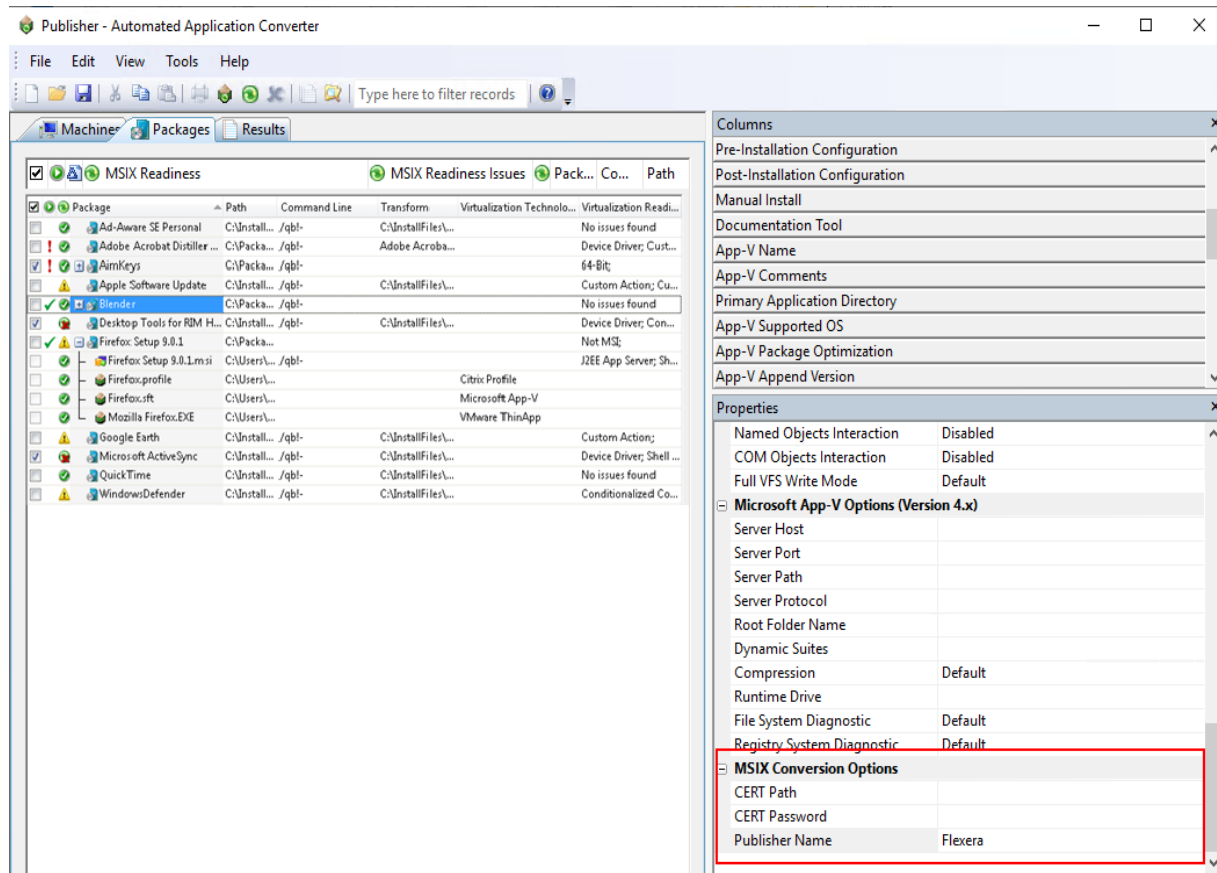
MSIX - Automated Batch Conversion

In AdminStudio 2019, you can now convert batch of MSI & EXE packages to MSIX using the Automated Application Converter tool.



Digital Signing of MSIX Package

In AdminStudio 2019, you can now digitally sign the MSIX package. To digitally sign the output MSIX package as part of conversion, specify Publisher Name, CERT Path and CERT Password in the Package Properties or **Tools >> Options**.



Testing MSIX Package in Remote Machine

Automated Application Converter tool uses the snap shot given in the **Snapshot Name**, In order to test the MSIX package in a remote machine, make sure the self signed certificate with the specified publisher name provided during conversion is installed in the remote machine.



Note • For more information on self signed certificate path with the specified publisher name, see [Digital Signing of MSIX Package](#)

New PowerShell Cmdlets

The following PowerShell cmdlets are included in the AdminStudio 2019:

- **New-ASCreateSoftwareTag** - Use to create a new Software Tag
- **Set-ASSoftwareTagProperties** - Use to set the Software Tag properties
- **Invoke-ASSignPackage** - Invokes a signing process for the MSIX package

InstallShield 2019

For more information on InstallShield 2019 Release Notes, see the [InstallShield 2019 Release Notes](#).

Editions

AdminStudio 2019 R2 is available in Standard, Professional, and Enterprise Editions. The following table lists the tools and features available in each of AdminStudio's editions.

Edition	Feature Type	Tools	Functionality
STANDARD	General	Repackager	Repackage applications into Windows Installer format Perform basic ISO tagging, including creation of tag files
		Package Distribution Wizard	Prepare packages for distribution
		InstallShield 2019 R2 (Professional Edition)	Customize Windows Installer packages by either directly editing them or by creating transforms
		Tuner	Customize Windows Installer packages by creating transforms
		Application Isolation Wizard	Resolve component versioning conflicts
	Application Virtualization	Automated Application Converter (Single Application Version)	Convert a package to a virtual application in the following formats: <ul style="list-style-type: none">● Microsoft App-V (4.x and 5.1)● Citrix XenApp● VMware ThinApp (4.x and 5.x) Convert one package at a time
		Conversion Wizard (Single Application Version)	
		Virtual Package Editor	Edit App-V packages
		Microsoft App-V Assistant ThinApp Assistant Citrix Assistant	Create a customized virtual package from an InstallShield project

Edition	Feature Type	Tools	Functionality
PROFESSIONAL	Same as Standard Edition , plus:		
	General	Application Manager / Home Tab	<p>Manage applications in an Application Manager database</p> <p>Manage a package's System Center Configuration Manager (2012 or Current Branch) and Symantec Altiris Client Management Suite deployment data</p> <p>View an application's System Center Configuration Manager (2012 or Current Branch) deployment status</p> <p>Perform advanced ISO tag file creation, editing, and storage</p>
		Application Manager / Analyze Tab	<p>Perform tests in the following categories:</p> <ul style="list-style-type: none"> Windows Installer Internal Consistency Evaluators Windows Installer Best Practices Application Conflicts <p>Test and fix one package at a time</p>
		Distribution Wizard	<p>Publish applications to System Center Configuration Manager (2012 or Current Branch) and Symantec Altiris Management Server.</p>
		OS Snapshot Wizard	<p>Capture basic operating system configuration in an OS Snapshot, which can be imported into the Application Manager to check for potential OS conflicts</p>
		QualityMonitor	<p>Perform Windows Installer testing, including testing in a locked down environment</p>
		Automated Application Converter	<p>Automatically repackage a legacy package (.exe) into a Windows Installer package (.msi)</p>
		(Single Application Version)	<p>Repackage one package at a time</p>
		Conversion Wizard	
		(Single Application Version)	
		Test on Virtual Machine Wizard	<p>Automatically launch a specified virtual machine and install a selected Windows Installer (.msi), App-V package (.appv), or installation executable (.exe) package for testing.</p>

Edition	Feature Type	Tools	Functionality
PROFESSIONAL (Continued)	Application Virtualization	Enhancements to Application Manager / Home Tab	<p>Import virtual packages into Application Manager</p> <p>View virtual package data in Application Manager</p> <p>Manage System Center Configuration Manager (2012 or Current Branch) deployment data for App-V 4.x and 5.1 packages</p> <p>Manage Citrix XenApp Server deployment data for Citrix XenApp profiles and App-V 4.x packages</p> <p>Manage Symantec Altiris Client Management Suite deployment data for Symantec Workspace and VMware ThinApp packages</p> <p>Manage App-V Server deployment data for App-V 4.x and 5.1 packages</p>
		Enhancements to Application Manager / Analyze Tab	<p>Test packages for compatibility to be virtualized to App-V, ThinApp, and XenApp formats</p> <p>Test App-V packages for best practices</p> <p>Test App-V packages for conflicts with other packages</p>
		Enhancements to Distribution Wizard	<p>Publish applications containing App-V 4.x and 5.1 packages to Microsoft App-V Server</p> <p>Publish applications containing App-V packages to System Center Configuration Manager (2012 or Current Branch) and Citrix XenApp Server</p> <p>Publish applications containing Citrix XenApp profiles and App-V 4.x packages to Citrix XenApp Server</p> <p>Publish applications containing Symantec Workspace and VMware ThinApp packages to Symantec Altiris Client Management Suite Server</p>

Edition	Feature Type	Tools	Functionality
PROFESSIONAL (Continued)	Application Compatibility Testing	Enhancements to Application Manager / Analyze Tab	<p>Test packages for compatibility with the following operating systems:</p> <ul style="list-style-type: none"> Windows 7 (32-bit and 64-bit) Windows 8.1 (32-bit and 64-bit) Windows 10 1903 (32 bit and 64 bit) Windows 10 1703 (32 bit and 64 bit) Windows 10 1709 (32 bit and 64 bit) Windows 10 1803 (32 bit and 64 bit) Windows 10 1809 (and 2019 LTSC) (32 bit and 64 bit) Windows Server 2008 R2 Windows Server 2012 and 2012 R2 Windows Server 2016 <p>On the Operating System Compatibility tab of the Analyze Deployment Type View, you can see detailed data for only the last package tested; for all other packages in the Application Manager, this tab is blank (even if the package has been previously tested)</p> <p>Ability to display Microsoft Application Compatibility Toolkit (ACT) database test results on ACT Summary tab of the Analyze Deployment Type View</p>
	Mobile App and macOS Support	Enhancements to Application Manager / Home Tab	<ul style="list-style-type: none"> Import of the following macOS desktop applications into the Application Manager: <ul style="list-style-type: none"> Apple installer package (.pkg file) Apple disk image (.dmg file) Mac App Store app (public store link) Import of the following mobile app formats into the Application Manager: <ul style="list-style-type: none"> Apple iOS mobile apps (local and public store link) Google Android mobile apps (local and public store link) Microsoft Windows Store mobile apps (local and public store link) Ability to import iOS Enterprise Policy Configuration files, view their settings, and determine the policy compatibility of iOS mobile apps. Ability to view iOS and Android mobile app reporting on feature use, device compatibility, 25 and OS compatibility.

Edition	Feature Type	Tools	Functionality
PROFESSIONAL (Continued)	Mobile App and macOS Support (Continued)	Enhancements to Application Manager / Home Tab (Continued)	<ul style="list-style-type: none"> ● Ability to customize Apple Installer Package PKG installer settings ● Ability to view deployment data for Windows Store mobile apps, including detection methods and framework customizations ● Ability to manage AirWatch Server deployment data for both Apple iOS and Google Android mobile apps (local and public store link) ● Ability to view and modify Casper deployment settings for macOS desktop applications
		Enhancements to Application Manager / Analyze Tab	<ul style="list-style-type: none"> ● Test Apple iOS mobile apps for best practices ● Test Apple iOS, Microsoft Windows, and Google Android mobile apps for risk assessment ● Test Apple iOS, Microsoft Windows, and Google Android mobile apps for operating system compatibility ● Test macOS desktop applications (.pkg, .dmg, and Mac App Store apps) for operating system compatibility and best practices
		Enhancements to Distribution Wizard	<p>Ability to publish applications containing the following mobile app formats to System Center Configuration Manager (2012 R2 or Current Branch) and AirWatch Server:</p> <ul style="list-style-type: none"> ● Apple iOS mobile apps (local and public store link) ● Google Android mobile apps (local and public store link) <p>Ability to publish applications containing the following mobile app format to System Center Configuration Manager (2012 R2 or Current Branch):</p> <ul style="list-style-type: none"> ● Windows Store (local and public store link) ● Microsoft UWP app packages (.appx) <p>Ability to publish applications containing the following package formats to JAMF Casper Suite:</p> <ul style="list-style-type: none"> ● Apple installer package (.pkg file) ● Apple disk image (.dmg file) ● Mac App Store app (public store link)

Edition	Feature Type	Tools	Functionality
ENTERPRISE	Same as Professional Edition , plus:		
	General	InstallShield 2019 (Premier Edition instead of Professional Edition)	Advanced customization of Windows Installer packages by either directly editing them or by creating transforms
		Application Manager / Reports Tab	Advanced reports including detailed summary and dashboard reports on Analyze test results, package data, and deployment information
		Platform API	Use to integrate your existing .NET applications or scripting environments like Microsoft PowerShell with AdminStudio
		Software Repository	Secure storage system for AdminStudio package data, including version management
		Reports (Web Tool)	Generate reports on packages stored in the Application Manager, including reports using custom SQL queries
		Security Console (Web Tool)	Manage AdminStudio user accounts and directory services Manage AdminStudio roles and permissions
		Automated Application Converter (Multiple Application Version) Conversion Wizard (Multiple Application Version)	Automatically repackage legacy packages (.exe) into Windows Installer packages (.msi) Ability to perform automated repackaging of multiple packages at a time
	Application Virtualization	Automated Application Converter (Multiple Application Version) Conversion Wizard (Multiple Application Version)	Ability to perform automated conversion of multiple packages at a time
		Enhancements to Application Manager / Reports	Includes the Application Virtualization Compatibility Dashboard report The Application Readiness Dashboard includes an Application Virtualization Compatibility summary chart and App-V Best Practices and App-V Conflicts test results summary charts.

Edition	Feature Type	Tools	Functionality
ENTERPRISE (Continued)	Application Compatibility Testing	Enhancements to Application Manager / Analyze Tab	<p>Ability to test and fix multiple packages or groups of packages simultaneously</p> <p>Ability to view package-level test details for Operating System Compatibility and Browser Compatibility tests for all packages in the Application Manager, not just the last one tested</p> <p>Import of web applications and web deploy packages into the Application Manager</p> <p>Test web applications for compatibility with the following browsers:</p> <ul style="list-style-type: none"> ● Internet Explorer 11 ● Microsoft Edge <p>Test web deploy packages for compatibility with the following platforms:</p> <ul style="list-style-type: none"> ● Windows Server 2012 R2 ● Windows Server 2016 ● Microsoft Azure Application Services <p>Test web deploy packages for best practices.</p> <p>Test web deploy packages for browser compatibility.</p>
		Enhancements to Application Manager / Reports	<p>Display of Microsoft ACT database test results on the Reports tab</p>
		Enhancements to Platform API	<p>Ability to use the Test-ASPackage and Resolve-ASPackage Platform API commands to perform batch package testing and issue resolution.</p>

System Requirements

This section lists the requirements for the AdminStudio machine, Application Catalog database server, Web server, and virtual machines.

- [Compatibility Summary](#)
- [AdminStudio Machine](#)
- [Distribution Systems](#)
- [Application Catalog Database Server](#)
- [AdminStudio Enterprise Server / Workflow Manager Server](#)
- [Automated Application Converter](#)

Compatibility Summary

AdminStudio 2019 supports the following versions of the listed software.

Category	Item	Supported Versions
Operating System for: <ul style="list-style-type: none"> • AdminStudio • Standalone Repackager • Standalone Tuner 	Microsoft Windows	<ul style="list-style-type: none"> • Windows 7 • Windows 8.1 • Windows 10 1903 (32 bit and 64 bit) • Windows 10 1703 (32 bit and 64 bit) • Windows 10 1709 (32 bit and 64 bit) • Windows 10 1803 (32 bit and 64 bit) • Windows 10 1809 (and 2019 LTSC) (32 bit and 64 bit) • Windows Server 2008 R2 • Windows Server 2012 • Windows Server 2012 R2 • Windows Server 2016
AdminStudio Web Server Operating System (AdminStudio Enterprise Server, AdminStudio Inventory and Rationalization, Workflow Manager)	Microsoft Windows Server	<ul style="list-style-type: none"> • Windows Server 2008 R2 • Windows Server 2012 • Windows Server 2012 R2 • Windows Server 2016

Category	Item	Supported Versions
Application Catalog Database	Microsoft SQL Server	● 2008 R2
		● 2012
		● 2016
		● 2017
Flexera Software Product Integration	FlexNet Manager Platform / FlexNet Manager Suite (On Premises)	9.2 SP1 or later
	FlexNet Manager Suite (Cloud)	2014 or later
	App Portal	7.5.3 or later
	Workflow Manager	2015 or later
	Flexera Service Gateway	1.0 or later
Virtual Machines for Virtualization	VMware Workstation	6.5 or later
	VMware ESXi	VMware ESX/ESXi Server, Version 5.5 or later
	VMware vSphere	5.5
	Microsoft Hyper-V Server	2008 R2 or later
Virtual Formats	App-V	App-V 4.5 through 5.1
	VMware ThinApp	4.x and 5x
Microsoft App-V Sequencer	App-V Sequencer	5.1
Desktop Distribution (Applications)	System Center Configuration Manager	2007, 2012 R2, 2012 R2 SP1, Current Branch
	Microsoft App-V Server	5.1
	Symantec Altiris Client Management Suite	7.5
	Citrix XenApp Server	6.5





Category	Item	Supported Versions
Desktop Distribution (Packages)	Novell ZENworks Configuration Management	10 and 11
	LANDESK Management Suite	9
	System Center Configuration Manager	2007, 2012 R2, 2012 R2 SP1, Current Branch
	Altiris Notification Server	6.5
	Marimba NCP	4.7.2
Mobile Distribution	AirWatch Server	6.5
	Microsoft App-V Server	5.1
	Microsoft System Center Configuration Manager	2012 R2, 2012 R2 SP1
Desktop Operating Systems Supported for compatibility testing	Windows	<ul style="list-style-type: none"> 7 (32-bit and 64-bit) 8.1 (32-bit and 64-bit) 10 1903 (32 bit and 64 bit) 10 1703 (32 bit and 64 bit) 10 1709 (32 bit and 64 bit) 10 1803 (32 bit and 64 bit) 10 1809 (and 2019 LTSC) (32 bit and 64 bit)
	Windows Server	<ul style="list-style-type: none"> 2008 R2 2012 2016
	Mac OS	<ul style="list-style-type: none"> 10.11 (El Capitan) 10.12 (Sierra)

Category	Item	Supported Versions
Mobile Operating Systems Supported for compatibility testing	Apple iOS	<ul style="list-style-type: none"> 6 (32-bit) 7 (32-bit and 64-bit) 8 (32-bit and 64-bit) 9 (32-bit and 64-bit) 10 (32-bit and 64-bit)
	Google Android	<ul style="list-style-type: none"> 4.1 Jelly Bean 4.2 Jelly Bean 4.3 Jelly Bean 4.4 KitKat 5.0 Lollipop 6.0 Marshmallow 7.0 Nougat
	Windows Phone	<ul style="list-style-type: none"> 8.1 10
Internet Browsers Supported for browser compatibility testing	Microsoft Internet Explorer	11
	Microsoft Edge	Current version
Internet Browsers For viewing AdminStudio Enterprise Server, AdminStudio Inventory and Rationalization, and Workflow Manager	Mozilla Firefox	Firefox for Windows 25.0 or later
	Google Chrome	Chrome for Windows 33.0 or later
	Microsoft Internet Explorer	Microsoft Internet Explorer 9.0 or later
	Microsoft Edge	Current version
	Apple Safari	Safari for Mac OS X and iOS

Category	Item	Supported Versions
Mobile Devices	Apple iOS Devices	<ul style="list-style-type: none"> ● iPad WiFi ● iPad 2 3G and iPad 2 WiFi ● iPad Third Gen and iPad Third Gen 4G ● iPad Fourth Gen and iPad Fourth Gen 4G ● iPad Fifth Gen and iPad Fifth Gen 4G ● iPad Sixth Gen and iPad Sixth Gen LTE ● iPad Pro 9.7, 9.7 LTE ● iPad Pro 12.9, 12.9 LTE ● iPad Mini ● iPad Mini 3 and iPad Mini 3LTE ● iPad Mini 4G ● iPad Mini 4 and 4LTE ● iPad Mini Retina and iPad Mini Retina 4G ● iPhone 4S ● iPhone 5, iPhone 5c, and iPhone 5s ● iPhone 6 and iPhone 6 Plus ● iPhone 6s and iPhone 6s Plus ● iPhone SE
	Google Android Devices	<ul style="list-style-type: none"> ● Samsung Galaxy Grand 2 ● Google Nexus 5, 5X, 6, 6P, 9 ● Samsung Galaxy Note 2, 3, 4, 5, 6, 7 ● Samsung Galaxy Note Pro ● Samsung Galaxy S4, S5, S7 ● Samsung Galaxy Tab S2, 3
	Windows Phone Devices	<ul style="list-style-type: none"> ● Microsoft Lumia535 ● Microsoft Lumia 930 ● Microsoft SurfacePro 3
API	PowerShell	4.x
Application Compatibility	Microsoft Application Compatibility Toolkit (ACT)	5.6

AdminStudio Machine

The following table lists the recommended system configuration for a machine running AdminStudio.


Item	Description
Processor	32-bit or 64-bit processor at 2 GHz or greater  Note • All of the AdminStudio tools run on 64-bit Windows operating systems. To repackage 64-bit applications or create 64-bit App-V packages, install AdminStudio on a 64-bit Windows operating system.
RAM	4 GB
Hard Disk	4 GB of free space
Display	Designed for XGA at 1024 x 768 resolution or higher  Note • For the best user experience, a monitor resolution of 1920 x 1080 or greater is recommended.
MSXML	MSXML 6.0  Note • MSXML is installed by the AdminStudio installer.
Operating Systems	<ul style="list-style-type: none"> • Windows 7 • Windows 8 and Windows 8.1 • Windows 10 • Windows Server 2008 R2 • Windows Server 2012, Windows Server 2012 R2, Windows Server 2016  Note • Support for Windows Vista was removed due to a modification made by Microsoft. For more information, see the following articles: <ul style="list-style-type: none"> • An ADO application does not run on down-level operating systems after you recompile it on a computer that is running Windows 7 SP 1 or Windows Server 2008 R2 SP 1 or that has KB983246 installed [Microsoft Article 2517589] • A Better Solution for the Windows 7 SP1 ADO GUID Changes
Browser	Microsoft Internet Explorer 7.0 or later
Privileges	Administrative privileges on the system

Distribution Systems

AdminStudio supports distribution of both applications and packages.

Application Distribution

AdminStudio supports the following distribution systems for the distribution of applications.

Distribution System	Support Version(s)
System Center Configuration Manager	2007, 2012 R2, 2012 R2 SP1, Current Branch
Symantec Altiris Client Management Suite	7.5
JAMF Casper Suite Server	9.9
Citrix XenApp Server	6.5
AirWatch Server	6.5 [Mobile applications only]
Microsoft App-V Server	5.1
	 <p>Note • In order for you to distribute packages to a Microsoft App-V Server, the WinRM service must be running, and the App-V Server must be in the list of trusted hosts. Both of these can be accomplished from PowerShell by running the following command:</p> <pre>set-item wsman:\localhost\Client\TrustedHosts -value <Machine Name></pre>

Package Distribution

AdminStudio supports the following distribution systems for the distribution of packages using the Legacy Distribution Wizard.

Distribution System	Supported Versions
Altiris Notification Server	Version 6.5
LANDESK Management Suite	Version 9
Novell ZENworks Configuration Management	Versions 10 and 11
Microsoft System Center Configuration Manager	2007, 2012 R2, 2012 R2 SP1, Current Branch

Application Catalog Database Server

The following table lists the recommended system configuration for a database server to store AdminStudio Application Catalog databases.



Note • While minimum requirements are listed below, the recommended system configuration for a database server is dependent upon the number of users and the number of packages that will be imported into the Application Catalog database.

Item	Description
Processor	32-bit or 64-bit processor at 2 GHz or greater
RAM	4 GB or greater (8 GB preferred)
Hard Disk Space	80 GB or greater
Operating System	Windows Server 2008 R2 or later (Windows Server 2012 or later preferred)
Database Software	<p>SQL Server 2008 R2 or later databases, including SQL Server 2012, SQL Server 2014, SQL Server 2016, and SQL Server 2017.</p> <ul style="list-style-type: none"> Dictionary sort order—SQL Server must be installed with case-insensitive dictionary sort order 52 on Code Page 1252 for non-Unicode data. For more information, use the <code>sp_helpsort</code> T-SQL command, which returns the following: Latin1-General, case-insensitive, accent-sensitive, kanatype-insensitive, width-insensitive for Unicode Data, SQL Server Sort Order 52 on Code Page 1252 for non-Unicode data Collation setting—SQL_Latin1_General_CP1_CI_AS is the required collation setting for AdminStudio database server. It is the only supported collation.



Note • Before attempting to connect to an existing Microsoft SQL Server, open SQL Server Configuration Manager and make sure that the following three protocols are enabled:



- Shared Memory
- Named Pipes
- TCP/IP

AdminStudio Enterprise Server / Workflow Manager Server

The following table lists the system requirements for the Web server that hosts the Workflow Manager Data Web service and the actual Workflow Manager Web site and/or AdminStudio Enterprise Server.



Note • While minimum requirements are listed below, the recommended system configuration for this web server is dependent upon the number of users.

Item	Description
Processor	32-bit or 64-bit processor at 2 GHz or greater  Note • AdminStudio Enterprise Server / Workflow Manager runs in 32-bit mode on a 64-bit OS.
RAM	4 GB or greater (8 GB preferred)
Hard Disk Space	100 GB or greater
Operating System	Windows Server 2008 R2 or later / English base language (Windows Server 2012 or later preferred)
IIS	IIS 7.0 or later
.NET	.NET Framework 4.0
MSXML	MSXML 6.0  Note • MSXML is installed by the AdminStudio Enterprise Server / Workflow Manager installer.

Automated Application Converter

This section lists the requirements for the virtual machines used by Automated Application Converter to perform repackaging. Also, the software requirements for specific virtual technologies are listed.

- [Virtual Machine Requirements](#)
- [Virtual Technology Requirements](#)

Virtual Machine Requirements



Edition • *Automated Application Converter is included with AdminStudio Application Virtualization.*

Automated Application Converter performs automated repackaging on virtual machines. This section lists the virtual machine platform and virtual machine image system requirements.

- [Supported Virtual Machine Platforms](#)
- [VMware Requirements](#)
- [Microsoft Hyper-V Server Requirements](#)
- [Virtual Machine Image Requirements](#)

Supported Virtual Machine Platforms

The Automated Application Converter supports automated repackaging on virtual machines from the following platforms:

- VMware ESX/ESXi Server, Version 5.5 or later
- VMware Workstation 6.5 or later
- VMware vSphere 5.5
- Microsoft Hyper-V Server 2008 R2 or later

VMware Requirements

As described above, Automated Application Converter supports automated repackaging on VMware ESX/ESXi Server and VMware Workstation.

- [VMware REST API Requirement](#)
- [VMware ESX/ESXi Server Permission Requirements](#)
- [vSphere 5.5 Account Requirements](#)

VMware REST API Requirement

In order for Automated Application Converter to perform automated repackaging, it needs to communicate with the virtualization technology that you are using. If you are using VMware virtualization technology (VMware ESX or ESXi Server or a local VMware Workstation), the VMware REST APIs needs to be enabled on the same machine as the Automated Application Converter.



Note • When using VMware Workstation, it is recommended that you install VMware Workstation on the same machine as Automated Application Converter so that Automated Application Converter will use the version of the REST API that was designed for that specific version of VMware Workstation. Although it is likely that newer versions of the REST API will also work, it seems that the best approach is for Automated Application Converter to use the version of the REST API that was bundled with your version of VMware Workstation.

VMware ESX/ESXi Server Permission Requirements

If you plan to use a VMware ESX/ESXi Server in conjunction with Automated Application Converter, make sure that the account that you use to log in to this server has the permissions/roles needed to automatically open a VM using VMware REST API. The account needs to either have an administrator role assigned or, at least, have the following three roles assigned:

- All Privileges/Virtual Machine/State/Create Snapshot
- All Privileges/Virtual Machine/State/Delete Snapshot
- All Privileges/Virtual Machine/Interaction/Console Interaction

If the login account does not have these permissions/roles, Automated Application Converter will be unable to automatically boot up a virtual machine on that server.

vSphere 5.5 Account Requirements

In order to make Automated Application Converter (AAC) work with VMware virtual machines residing under vSphere 5.5, there are certain minimum permissions required for the vSphere user account. To assign these permissions to a vSphere user account, perform the following steps:

**Task**

To configure a vSphere 5.5 account to be used with Automated Application Converter:

1. In vSphere 5.5, open the **Assign Permissions** dialog box and assign a user the **Virtual machine power user (sample)** role, which consists of the following permissions:

Category	Permission	
Datastore	<ul style="list-style-type: none"> ● Browse datastore 	
Global	<ul style="list-style-type: none"> ● Cancel task 	
Scheduled task	<ul style="list-style-type: none"> ● Create task ● Remove task ● Modify task ● Run task 	
Virtual machine > Configuration	<ul style="list-style-type: none"> ● Add existing disk ● Modify device settings ● Add new disk ● Remove disk ● Add or remove device ● Rename ● Advanced ● Reset guest information ● Change CPU count ● Settings ● Change resource ● Upgrade virtual machine compatibility ● Disk lease ● Memory 	
Virtual machine > Interaction	<ul style="list-style-type: none"> ● Answer question ● Power off ● Configure CD media ● Power on ● Configure floppy media ● Reset ● Console interaction ● Suspend ● Device connection ● VMware Tools install ● Guest operating system management by REST API 	
Virtual machine > Snapshot management	<ul style="list-style-type: none"> ● Create snapshot ● Rename snapshot ● Remove snapshot ● Revert to snapshot 	

2. Also give the user account read-only access to the rest of the server.

Microsoft Hyper-V Server Requirements

As described above, Automated Application Converter supports automated repackaging on Microsoft Hyper-V Server. When preparing a Hyper-V Server for use with Automated Application Converter, make sure that the following conditions are met:

- **Configuration tools**—Verify that the Hyper-V configuration tools are installed on the Hyper-V server machine. These tools can be installed using the Microsoft Hyper-V Management Console.
- **Connection**—Verify that you can successfully connect to the Hyper-V Server from the machine where AdminStudio Automated Application Converter is installed.
- **Permissions**—Make sure that the Hyper-V Server user has the following permissions to perform operations on the Hyper-V machines:
 - Permission to create/restore/delete VM snapshots
 - Permission to start and stop virtual machines
 - Permission to access console sessions
- **Configuration settings**—Connecting to a WMI namespace on a remote computer running Windows Vista or Windows Server 2008 may require changes to configuration settings. Check the following configuration settings on the AdminStudio machine as well as on the Hyper-V Server machine:
 - Windows Firewall Settings
 - User Account Control (UAC) Settings
 - DCOM Settings
 - Common Information Model Object Manager (CIMOM) Settings

For detailed information, see [Connecting to WMI Remotely](#) at:

[http://msdn.microsoft.com/en-us/library/aa822854\(VS.85\).aspx](http://msdn.microsoft.com/en-us/library/aa822854(VS.85).aspx)

Virtual Machine Image Requirements

Automated Application Converter uses virtual machines to perform automated repackaging. These virtual machines have the following requirements:

Virtual Machine System Requirements

When creating a virtual machine image that will be hosted on one of the virtual machine platforms listed above, the recommended minimum requirements should meet those required by the applications you are trying to repackage. Since you repackage on the target deployment platform, the virtual machine image should closely resemble the target deployment environment.

Preparing Your Virtual Machines for Use With the Automated Application Converter

You need to prepare each virtual machine that you are going to use with the Automated Application Converter to perform automated repackaging by running the Virtual Machine Preparation setup and by creating a snapshot. For instructions, see [Preparing Your Virtual Machines for Use With the Automated Application Converter](#).

Virtual Technology Requirements

In order to convert to some virtual formats, there are some software requirements:

Virtual Format	Requirement
App-V 5.1	<ul style="list-style-type: none"> ● Conversion—To convert a package to App-V 5.1 format using Automated Application Converter's App-V 5.x with Sequencer method, the Microsoft Application Virtualization 5.1 Sequencer must be installed on the virtual machine where the conversion will take place. ● Upgrade—To upgrade an imported App-V 4.x package to App-V 5.1 format directly from Application Manager using the App-V Upgrade Wizard, the Microsoft Application Virtualization 5.1 Sequencer must be installed on the same machine as AdminStudio. ● Testing—To test an App-V package using Automated Application Converter, the Microsoft Application Virtualization 5.1 Client must be installed on the same machine as AdminStudio.
VMware ThinApp	To convert a package to VMware ThinApp format, VMware ThinApp must be installed on the same machine as AdminStudio, and all license agreements must have been accepted.

Downloading AdminStudio Installers

You can download the installers for AdminStudio, AdminStudio Service Packs, Standalone Repackager, Standalone Quality Monitor, and the FlexNet Licensing Server from the **Flexera Software Product and License Center**:

<https://flexerasoftware.flexnetoperations.com>

For information on using the Flexera Software Product and License Center, see the **Download and License Overview for AdminStudio**:

<http://www.flexerasoftware.com/downloads/instructions/productlicensing/en/adminstudio.htm>

AdminStudio 2019 R2 Evaluation Restrictions

When you run AdminStudio in trial/evaluation mode, all of the features in the AdminStudio Enterprise Edition tools are fully available, with the following restrictions:

- **Can create only one Application Catalog**—You are permitted to create only one Application Catalog, and it must be named AdminStudio Evaluation Catalog.
- **Ten package import limit**—Only 10 total packages (of one or more deployment types) can be imported into the Application Catalog.
- **Package deletion not permitted**—After you import a package into the Application Catalog, you are not permitted to delete it.
- **AdminStudio Platform API support is disabled**—All platform support is disabled.

Resolved Issues

This section lists the customer issues that were resolved in the following versions of AdminStudio:

- [AdminStudio 2019 R2](#)
- [AdminStudio 2019](#)

AdminStudio 2019 R2

The following table lists the customer issues that were resolved in AdminStudio 2019 R2

Issue	Description
IOJ-1987675	An Exception Object reference not set to an instance of an object is thrown after clicking on the Select Tests to Execute in the Analyze tab
IOJ-1921570	Error while trying to distribute Dell Bios updates to SCCM 1810 branch (German)
IOJ-1909256	Self Hosted License File is Invalid When Hyper-V is Enabled

AdminStudio 2019

The following table lists the customer issues that were resolved in AdminStudio 2019.

Issue	Description
IOJ-1914963	After running all the selected tests successfully, 'overall Test Results for Windows Installer Packages report' displays no data when an MSI package is imported along with more than one mst.

Issue	Description
IOJ-1914457	Execute- MSI command line missing '\' after \$dirFiles for transforms in Deploy-Application.ps1 under 'Perform Installation tasks here' section for MSI packages when wrapped to Ps1.
IOJ-1913460	Unable to Digitally Sign MSIX through Repackager as it throws an Warning "Warning: Either Pfx file or password is invalid,you may sign the package again after importing using context menu"
IOJ-1906270	Adminstudio 2018 R3 AAC crashing when attempting to use with vSphere
IOJ-1898125	More detailed messaging regarding permission checks on the database
IOJ-1896724	Make PowerShell Documentation more clear regarding licensing
IOJ-1892537	AAC Crash with Application Catalog using Software Repository
IOJ-1890197	Error when clicking on Select Tests to Execute
IOJ-1873175	Add Package version column to Operating System Compatibility Reports
IOJ-1863970	Reimport of MSI generates Software ID tag with the enable creation of Software ID tags option disabled
IOJ-1851535	Importing from SCCM will always generate the Software ID tag even if option to create the tag is disabled
IOJ-1851327	Add-AppvClientPackage fails after opening and saving without editing with Virtual Package Editor
IOJ-1848188	AdminStudio Fails to Install under System Context
IOJ-1846065	Specific tests for each Windows 10 build
IOJ-1845456	Packages that are managed by the Software Repository cannot be wrapped with PowerShell
IOJ-1839026	Issues importing specific application – ABB Test Signal Viewer
IOJ-1829427	AAC Logs
IOJ-1805625	Installation Monitoring not capturing all files without an extension (Package specific)
IOJ-1641260	Repackager's command line option -app launches Repackager with path enclosed in double quotes

Known Issues

In AdminStudio 2019 release, the following known issues are identified:

- [MSIX conversion using Remote Repackager](#)
- [MSIX conversion using Automated Application Converter](#)

MSIX conversion using Remote Repackager

In AdminStudio 2019, when you convert .msi or .exe packages to MSIX package using Remote Repackager tool, you cannot sign the packages during the conversion process.

MSIX conversion using Automated Application Converter

In AdminStudio 2019, when you convert .msi or .exe packages to MSIX package using Automated Application Converter tool in a remote machine,

The MSIX conversion will not happen in the following condition:

- If you change MSIX readiness status from **Ready** to **Required Packaging**, when both the MSIX readiness and Virtualization readiness status are Ready.

Legal Information

Copyright Notice

Copyright © 2019 Flexera

This publication contains proprietary and confidential information and creative works owned by Flexera and its licensors, if any. Any use, copying, publication, distribution, display, modification, or transmission of such publication in whole or in part in any form or by any means without the prior express written permission of Flexera is strictly prohibited. Except where expressly provided by Flexera in writing, possession of this publication shall not be construed to confer any license or rights under any Flexera intellectual property rights, whether by estoppel, implication, or otherwise.

All copies of the technology and related information, if allowed by Flexera, must display this notice of copyright and ownership in full.

Intellectual Property

For a list of trademarks and patents that are owned by Flexera, see <https://www.flexera.com/producer/company/about/intellectual-property/>. All other brand and product names mentioned in Flexera products, product documentation, and marketing materials are the trademarks and registered trademarks of their respective owners.

Restricted Rights Legend

The Software is commercial computer software. If the user or licensee of the Software is an agency, department, or other entity of the United States Government, the use, duplication, reproduction, release, modification, disclosure, or transfer of the Software, or any related documentation of any kind, including technical data and manuals, is restricted by a license agreement or by the terms of this Agreement in accordance with Federal Acquisition Regulation 12.212 for civilian purposes and Defense Federal Acquisition Regulation Supplement 227.7202 for military purposes. The Software was developed fully at private expense. All other use is prohibited.