

FLEXera™

AdminStudio 2018
Installation Guide

Legal Information

Book Name: AdminStudio 2018 Installation Guide
Part Number: ADS-2018-IG00
Product Release Date: 26 April 2018

Copyright Notice

Copyright © 2018 Flexera

This publication contains proprietary and confidential information and creative works owned by Flexera and its licensors, if any. Any use, copying, publication, distribution, display, modification, or transmission of such publication in whole or in part in any form or by any means without the prior express written permission of Flexera is strictly prohibited. Except where expressly provided by Flexera in writing, possession of this publication shall not be construed to confer any license or rights under any Flexera intellectual property rights, whether by estoppel, implication, or otherwise.

All copies of the technology and related information, if allowed by Flexera, must display this notice of copyright and ownership in full.

Intellectual Property

For a list of trademarks and patents that are owned by Flexera, see <https://www.flexera.com/producer/company/about/intellectual-property/>. All other brand and product names mentioned in Flexera products, product documentation, and marketing materials are the trademarks and registered trademarks of their respective owners.

Restricted Rights Legend

The Software is commercial computer software. If the user or licensee of the Software is an agency, department, or other entity of the United States Government, the use, duplication, reproduction, release, modification, disclosure, or transfer of the Software, or any related documentation of any kind, including technical data and manuals, is restricted by a license agreement or by the terms of this Agreement in accordance with Federal Acquisition Regulation 12.212 for civilian purposes and Defense Federal Acquisition Regulation Supplement 227.7202 for military purposes. The Software was developed fully at private expense. All other use is prohibited.

Contents

- 1 AdminStudio 2018 Installation Guide 5**
- Contacting Us 6**

- 2 System Requirements 7**
- Hardware and Software Requirements 7**
- AdminStudio Machine 8
- Distribution Systems 9
- Application Catalog Database Server 10
- AdminStudio Enterprise Server / Workflow Manager Server 11
- Automated Application Converter 12
- Virtual Machine Requirements 12
- Supported Virtual Machine Platforms 12
- VMware Requirements 12
- Microsoft Hyper-V Server Requirements 15
- Virtual Machine Image Requirements 15
- Virtual Technology Requirements 16
- Limited Edition Requirements 16
- Database Server Permissions 17**
- Installing Internet Information Services (IIS) 18**
- Port Requirements for Integration 19**

3	Installing AdminStudio 2018	23
	Installing AdminStudio	23
	Installing AdminStudio Using the Installation Wizard.	23
	Installing AdminStudio Silently Via Command Line	25
	Upgrading an Existing Application Catalog to AdminStudio 2018	26
	Upgrading an Application Catalog.	26
	Upgrading an Application Catalog Using the User Interface	26
	Upgrading an Application Catalog Manually Using Scripts	28
	Changing the Database Collation of the Upgraded Application Catalog	35
4	Installing AdminStudio 2018 Limited Editions	37
	Installing AdminStudio 2018 ZENworks Edition	37
	Installing AdminStudio 2018 Limited Edition for LANDesk Management Suite	39
5	Activating AdminStudio	41
	About Activation.	42
	About Activation Codes	42
	About Registration	42
	Activating AdminStudio (Full Edition) Upon Initial Startup.	42
	Activating AdminStudio Purchased from Flexera Software.	43
	Activating AdminStudio Purchased from a Reseller	43
	Activating AdminStudio ZENworks Edition	45
	Registering and Activating AdminStudio Limited Edition for LANDesk Management Suite	47
	Activation Troubleshooting	49
	General Troubleshooting	49
	Activating Through a Web Page	50
	Activating Products Silently	51
	Reactivating AdminStudio on a Different Computer	52
6	Upgrading Your Product Edition	53
7	Evaluating AdminStudio	55
	Evaluating AdminStudio Enterprise Edition Client Tools	56
	AdminStudio 2018 Evaluation Restrictions	57
	Evaluating AdminStudio’s Microsoft App-V Support.	57
	Evaluating the Automated Application Converter “Multiple Application” Option	57
	Evaluating the Client Tools in the Limited Edition for LANDesk Management Suite	58
	Activating AdminStudio After Evaluation Period	58
	Index	61

1

AdminStudio 2018 Installation Guide

Information about installing the AdminStudio is presented in the following sections:

Table 1-1 • Installing AdminStudio 2018

Topic	Content
System Requirements	Lists the hardware and software requirements for the components of the AdminStudio tools.
Installing AdminStudio 2018	Describes how to install the AdminStudio tools. This section also explains how to upgrade an existing Application Catalog to be used with AdminStudio 2018. <ul style="list-style-type: none">• Installing AdminStudio• Upgrading an Existing Application Catalog to AdminStudio 2018
Installing AdminStudio 2018 Limited Editions	Describes how to install the following AdminStudio Limited Editions: <ul style="list-style-type: none">• Installing AdminStudio 2018 ZENworks Edition• Installing AdminStudio 2018 Limited Edition for LANDesk Management Suite
Activating AdminStudio	Explains how to activate AdminStudio, and provides activation troubleshooting information.
Upgrading Your Product Edition	Explains how to use AdminStudio's built-in upgrade capability to activate features in a higher Edition without re-installing the application.
Evaluating AdminStudio	Explains how to evaluate the AdminStudio Enterprise Edition client tools and also how to activate your product after purchasing an activation code.



Note • For detailed information on the new features in AdminStudio 2018 and a breakdown of available Editions, see the [AdminStudio 2018 Release Notes](#).

Contacting Us

Flexera is headquartered in Itasca, Illinois, and has offices worldwide. To contact us or to learn more about our products, visit our website at:

<http://www.flexera.com>

2

System Requirements

Before installing the AdminStudio tools, review the following hardware and software requirements.

- [Hardware and Software Requirements](#)
- [Database Server Permissions](#)
- [Installing Internet Information Services \(IIS\)](#)
- [Port Requirements for Integration](#)

Hardware and Software Requirements

All of AdminStudio—Web sites, XML Web services, and database—can reside on a single machine; however, the configuration detailed in this section is recommended.




This section lists the requirements for AdminStudio client tool machine, Application Catalog database server, Web server, Software Repository server, and virtual machines.

- [AdminStudio Machine](#)
- [Distribution Systems](#)
- [Application Catalog Database Server](#)
- [AdminStudio Enterprise Server / Workflow Manager Server](#)
- [Automated Application Converter](#)
- [Limited Edition Requirements](#)

AdminStudio Machine

The following table lists the recommended system configuration for a machine running AdminStudio:

Table 2-1 • AdminStudio Machine Requirements

Item	Description
Platform	32-bit or 64-bit processor at 2 GHz or greater  Note • All of the AdminStudio tools run on 64-bit Windows operating systems. To repackage 64-bit applications or create 64-bit App-V packages, install AdminStudio on a 64-bit Windows operating system.
RAM	4 GB
Hard Disk	4 GB of free space
Display	Designed for XGA at 1024 x 768 resolution or higher
MSXML	MSXML 6.0  Note • MSXML is installed by the AdminStudio installer.
Operating Systems	<ul style="list-style-type: none">• Windows 7• Windows 8 and Windows 8.1• Windows 10• Windows Server 2008 R2• Windows Server 2012 and Windows Server 2012 R2, Windows Server 2016  Note • Support for Windows Vista was removed due to a modification made by Microsoft. For more information, see the following articles: <ul style="list-style-type: none">• An ADO application does not run on down-level operating systems after you recompile it on a computer that is running Windows 7 SP 1 or Windows Server 2008 R2 SP 1 or that has KB983246 installed [Microsoft Article 2517589]• A Better Solution for the Windows 7 SP1 ADO GUID Changes
Browser	Microsoft Internet Explorer 7.0 or later
Privileges	Administrative privileges on the system


Distribution Systems

AdminStudio supports distribution of both applications and packages.

Application Distribution

AdminStudio supports the following distribution systems for the distribution of applications.

Table 2-2 • Distribution System Requirements

Distribution System	Support Version(s)
System Center Configuration Manager	2007, 2012 R2, 2012 R2 SP1, Current Branch
Symantec Altiris Client Management Suite	7.5
JAMF Casper Suite Server	9.9
Citrix XenApp Server	6.5
AirWatch Server	6.5 [Mobile applications only]
Microsoft App-V Server	5.1
	 <p>Note • In order for you to distribute packages to a Microsoft App-V Server, the WinRM service must be running, and the App-V Server must be in the list of trusted hosts. Both of these can be accomplished from PowerShell by running the following command:</p> <pre>set-item wsman:\localhost\Client\TrustedHosts -value <Machine Name></pre>

Package Distribution

AdminStudio supports the following distribution systems for the distribution of packages using the Legacy Distribution Wizard.

Table 3 •


Distribution System	Supported Versions
Altiris Notification Server	Version 6.5
LANDESK Management Suite	Version 9
Novell ZENworks Configuration Management	Versions 10 and 11
Microsoft System Center Configuration Manager	2007, 2012 R2, 2012 R2 SP1, Current Branch

Application Catalog Database Server

The following table lists the recommended system configuration for a database server to store AdminStudio Application Catalog databases.

Table 2-1 • Application Catalog Database Server Requirements

Item	Description
Platform	32-bit or 64-bit processor at 2 GHz or greater
RAM	4 GB or greater (8 GB preferred)
Hard Disk Space	80 GB or greater
Operating System	Windows Server 2008 R2 or later (Windows Server 2012 or later preferred)
Database Software	<p>SQL Server 2008 R2 or later databases, including SQL Server 2012, SQL Server 2014, SQL Server 2016, and SQL Server 2017.</p> <ul style="list-style-type: none">● Dictionary sort order—SQL Server must be installed with case insensitive dictionary sort order 52 on Code Page 1252 for non-Unicode data. For more information, use the <code>sp_helpsort</code> T-SQL command, which returns the following: Latin1-General, case-insensitive, accent-sensitive, kanatype-insensitive, width-insensitive for Unicode Data, SQL Server Sort Order 52 on Code Page 1252 for non-Unicode data● Collation setting—SQL_Latin1_General_CP1_CI_AS is the required collation setting for AdminStudio database server. It is the only supported collation.



 **Note** • Before attempting to connect to an existing Microsoft SQL Server, open SQL Server Configuration Manager and make sure that the following three protocols are enabled:

- Shared Memory
- Named Pipes
- TCP/IP

AdminStudio Enterprise Server / Workflow Manager Server

The following table lists the system requirements for the Web server that hosts the Workflow Manager Data Web service and the actual Workflow Manager Web site and/or AdminStudio Enterprise Server:

Table 2-2 • AdminStudio Enterprise Server / Workflow Manager Server Requirements

Item	Description
Platform	32-bit or 64-bit processor at 2 GHz or greater  Note • AdminStudio Enterprise Server / Workflow Manager runs in 32-bit mode on a 64-bit OS.
RAM	4 GB or greater (8 GB preferred)
Hard Disk Space	100 GB or greater
Operating System	Windows Server 2008 R2 or later / English base language (Windows Server 2012 preferred)
IIS	IIS 7.0 or later
.NET	.NET Framework 4.0
MSXML	MSXML 6.0  Note • MSXML is installed by the AdminStudio Enterprise Server / Workflow Manager installer.

Automated Application Converter

This section lists the requirements for the virtual machines used by Automated Application Converter to perform repackaging. Also, the software requirements for specific virtual technologies are listed.

- [Virtual Machine Requirements](#)
- [Virtual Technology Requirements](#)

Virtual Machine Requirements

Automated Application Converter performs automated repackaging on virtual machines. This section lists the virtual machine platform and virtual machine image system requirements.

- [Supported Virtual Machine Platforms](#)
- [VMware Requirements](#)
- [Microsoft Hyper-V Server Requirements](#)
- [Virtual Machine Image Requirements](#)

Supported Virtual Machine Platforms

The Automated Application Converter supports automated repackaging on virtual machines from the following platforms:

- VMware ESX/ESXi Server, Version 3.5 Update 3 or later
- VMware Workstation 6.5 or later
- VMware vSphere 5.5
- Microsoft Hyper-V Server 2008 R2 or later

VMware Requirements

As described above, Automated Application Converter supports automated repackaging on VMware ESX/ESXi Server and VMware Workstation.

- [VMware VIX API Requirement](#)
- [VMware ESX/ESXi Server Permission Requirements](#)
- [vSphere 5.5 Account Requirements](#)

VMware VIX API Requirement

In order for Automated Application Converter to perform automated repackaging, it needs to communicate with the virtualization technology that you are using. If you are using VMware virtualization technology (VMware ESX or ESXi Server or a local VMware Workstation), the VMware VIX API needs to be installed on the same machine as the Automated Application Converter. You can do this by either installing VMware Workstation on that machine or by downloading and installing the VMware VIX API from the following location:

<http://www.vmware.com/support/developer/vix-api>



Note • When using VMware Workstation, it is recommended that you install VMware Workstation on the same machine as Automated Application Converter so that Automated Application Converter will use the version of the VIX API that was designed for that specific version of VMware Workstation. Although it is likely that newer versions of the VIX API will also work, it seems that the best approach is for Automated Application Converter to use the version of the VIX API that was bundled with your version of VMware Workstation.

VMware ESX/ESXi Server Permission Requirements

If you plan to use a VMware ESX/ESXi Server in conjunction with Automated Application Converter, make sure that the account that you use to log in to this server has the permissions/roles needed to automatically open a VM using VMware VIX API. The account needs to either have an administrator role assigned or, at least, have the following three roles assigned:

- All Privileges/Virtual Machine/State/Create Snapshot
- All Privileges/Virtual Machine/State/Delete Snapshot
- All Privileges/Virtual Machine/Interaction/Console Interaction

If the login account does not have these permissions/roles, Automated Application Converter will be unable to automatically boot up a virtual machine on that server.

vSphere 5.5 Account Requirements

In order to make Automated Application Converter (AAC) work with VMware virtual machines residing under vSphere 5.5, there are certain minimum permissions required for the vSphere user account. To assign these permissions to a vSphere user account, perform the following steps:



Task *To configure a vSphere 5.5 account to be used with Automated Application Converter:*

1. In vSphere 5.5, open the **Assign Permissions** dialog box and assign a user the **Virtual machine power user (sample)** role, which consists of the following permissions:

Category	Permission
Datastore	<ul style="list-style-type: none"> ● Browse datastore
Global	<ul style="list-style-type: none"> ● Cancel task
Scheduled task	<ul style="list-style-type: none"> ● Create task ● Modify task ● Remove task ● Run task
Virtual machine > Configuration	<ul style="list-style-type: none"> ● Add existing disk ● Add new disk ● Add or remove device ● Advanced ● Change CPU count ● Change resource ● Disk lease ● Memory ● Modify device settings ● Remove disk ● Rename ● Reset guest information ● Settings ● Upgrade virtual machine compatibility
Virtual machine > Interaction	<ul style="list-style-type: none"> ● Answer question ● Configure CD media ● Configure floppy media ● Console interaction ● Device connection ● Guest operating system management by VIX API ● Power off ● Power on ● Reset ● Suspend ● VMware Tools install
Virtual machine > Snapshot management	<ul style="list-style-type: none"> ● Create snapshot ● Remove snapshot ● Rename snapshot ● Revert to snapshot

2. Also give the user account read-only access to the rest of the server.

Microsoft Hyper-V Server Requirements

As described above, Automated Application Converter supports automated repackaging on Microsoft Hyper-V Server. When preparing a Hyper-V Server for use with Automated Application Converter, make sure that the following conditions are met:

- **Configuration tools**—Verify that the Hyper-V configuration tools are installed on the Hyper-V server machine. These tools can be installed using the Microsoft Hyper-V Management Console.
- **Connection**—Verify that you can successfully connect to the Hyper-V Server from the machine where AdminStudio Automated Application Converter is installed.
- **Permissions**—Make sure that the Hyper-V Server user has the following permissions to perform operations on the Hyper-V machines:
 - Permission to create/restore/delete VM snapshots
 - Permission to start and stop virtual machines
 - Permission to access console sessions
- **Configuration settings**—Connecting to a WMI namespace on a remote computer running Windows Vista or Windows Server 2008 may require changes to configuration settings. Check the following configuration settings on the AdminStudio machine as well as on the Hyper-V Server machine:
 - Windows Firewall Settings
 - User Account Control (UAC) Settings
 - DCOM Settings
 - Common Information Model Object Manager (CIMOM) Settings

For detailed information, see [Connecting to WMI Remotely](#) at:

[http://msdn.microsoft.com/en-us/library/aa822854\(VS.85\).aspx](http://msdn.microsoft.com/en-us/library/aa822854(VS.85).aspx)

Virtual Machine Image Requirements

Automated Application Converter uses virtual machines to perform automated repackaging. These virtual machines have the following requirements:

Virtual Machine System Requirements

When creating a virtual machine image that will be hosted on one of the virtual machine platforms listed above, the recommended minimum requirements should meet those required by the applications you are trying to repackage. Since you repackage on the target deployment platform, the virtual machine image should closely resemble the target deployment environment.

Preparing Your Virtual Machines for Use With the Automated Application Converter

You need to prepare each virtual machine that you are going to use with the Automated Application Converter to perform automated repackaging by running the Virtual Machine Preparation setup and by creating a snapshot. For instructions, see [Preparing Your Virtual Machines for Use With the Automated Application Converter](#).

Virtual Technology Requirements

In order to convert to some virtual formats, there are some software requirements:

Table 2-3 • Virtual Technology Requirements

Virtual Format	Requirement
App-V 5.1	<ul style="list-style-type: none">● Conversion—To convert a package to App-V 5.1 format using Automated Application Converter’s App-V 5.x with Sequencer method, the Microsoft Application Virtualization 5.1 Sequencer must be installed on the virtual machine where the conversion will take place.● Upgrade—To upgrade an imported App-V 4.x package to App-V 5.1 format directly from Application Manager using the App-V Upgrade Wizard, the Microsoft Application Virtualization 5.1 Sequencer must be installed on the same machine as AdminStudio.● Testing—To test an App-V package using Automated Application Converter, the Microsoft Application Virtualization 5.1 Client must be installed on the same machine as AdminStudio.
VMware ThinApp	To convert a package to VMware ThinApp format, VMware ThinApp must be installed on the same machine as AdminStudio, and all license agreements must have been accepted.

Limited Edition Requirements

The AdminStudio Limited Editions have the following additional requirements:

- [ZENworks Edition Requirement: Connection to a ZENworks Server](#)
- [Limited Edition for LANDesk Management Suite Requirement: Connection to a LANDesk Server](#)

ZENworks Edition Requirement: Connection to a ZENworks Server

To use AdminStudio ZENworks Edition, you must be able to connect to a ZENworks server. The first time you launch one of the AdminStudio tools, you will be prompted to enter the login credentials to a ZENworks server. After you successfully connect to that server, you will not be required to enter this information again.



Note • For more information, see [Activating AdminStudio ZENworks Edition](#).

Limited Edition for LANDesk Management Suite Requirement: Connection to a LANDesk Server

The AdminStudio Limited Edition for LANDesk Management Suite can only be used when the LANDesk Management Suite is already installed. The first time you launch an AdminStudio LANDesk Edition tool, you will be prompted to log in to a LANDesk Management Suite Server. After a successful login, you will not be prompted to login again.

Database Server Permissions

In order to operate some AdminStudio tools, AdminStudio users require specific database permissions. Depending upon the type of user, you may wish to be more selective in the permissions you assign to these users.

If you have AdminStudio Enterprise Edition, you can assign permissions to individual users using the Role functionality in AdminStudio Enterprise Server, as described in *AdminStudio and Workflow Manager Roles and Permissions* in the AdminStudio Help Library. Otherwise, you can provide more selective restrictions at the database server level using the information in the following table, AdminStudio Database Server Permissions.

Every AdminStudio user will need at a minimum read privilege to every table in the Application Catalog. The minimum permissions are described below, based upon the type of operation you want the user to perform.

Table 2-4 • AdminStudio Database Server Permissions

Type	Description
General User Administrative Process	<p>General administrative processes cover a range of activities such as adding groups, moving packages around, adding comments, updating extending attributes, etc. For example, these tables include <code>cstblPackage</code>, <code>cstblGroups</code>, and <code>cstblGroupPackages</code> Any Application Catalog table which is not referenced explicitly in the discussion for the other AdminStudio processes should be considered a general user administrative table.</p> <p>Most AdminStudio users should have write access to these tables.</p>
Import Process	<p>The user importing MSI packages, merge modules, or just about anything will require write access to a significant set of Application Catalog tables depending on the type of import. For example:</p> <ul style="list-style-type: none"> ● MSI package file—For MSI package file import operations, those Application Catalog tables with a <code>csmsi</code> prefix are populated. ● Merge modules—For merge module import operations, the <code>csmsm</code> prefixed tables are used. ● Patches—For patch import operations, the <code>cspch</code> prefix tables are used. ● OS snapshots—For OS snapshot import operations, the <code>osc</code> prefix tables are used. <p>Occasionally, the Import process will need to create new tables in the Application Catalog to support the import of custom table data. Either the necessary server privileges need to be given for these users, or the import of custom table data needs to be disabled within the Application Manager Options dialog box.</p>
Validation Process	<p>For this process, the user will need to be able to write entries into the <code>cstblValidationResults</code> and <code>cstblValidationConfiguration</code> tables.</p>
Dependency Scanning Process	<p>For this process, the user will need to be able to write entries into the <code>cstblPackageExeDependencies</code> table.</p>
Conflict Detection and Resolution Process	<p>For this process, the user will need to be able to write entries into the <code>cstblConflict</code> prefixed table names.</p>

Table 2-4 • AdminStudio Database Server Permissions (cont.)

Type	Description
Patch Impact Analysis Process	For this process, the user will need to be able to write entries into the cstb1PatchConflict prefixed table names. This process will create and delete some temporary tables and, as such, the user performing this process should have the necessary server privileges to perform these operations.
Package Auto Import Process	The Package Auto Import process will ultimately generate a series of Import operations, and so the user performing these operations should have the Import process rights described above. If the user wants to edit these operations in the Wizard, then they will need write accession to the cstb1Subscribed prefixed tables.
Workflow Operations Process	For this process, the user will need to be able to write entries into the wftb1 prefixed table names.
Tools Properties Operations	For this process, the user will need to be able to write entries into the wftb1Tools table name.
Pre-Deployment Testing	For this process, the user will need to be able to write entries into the pdt prefixed table names.



Note • A number of processes within AdminStudio generate data which can subsequently be deleted by the AdminStudio user. Any discussion of the minimum privileges required for a specific AdminStudio process will also imply the privileges to delete this same data.

Installing Internet Information Services (IIS)

Internet Information Services (IIS) is required to be installed on the machine on which you are installing AdminStudio Enterprise Server / Workflow Manager.

To install IIS on a Windows Server 2008 R2 machine, perform the following steps.



Task

To install IIS, perform the following steps:

1. Open **Server Manager**.
2. In the tree, select **Roles**.
3. Click **Add Roles**. The **Before You Begin** panel of the **Add Roles Wizard** opens.
4. Click **Next**. The **Select Server Roles** panel opens.
5. Select **Application Server**. You will be prompted to **Add features required for Application Server?**
6. Click **Add Required Features**.

7. Back on the **Select Server Roles** panel, select **Web Server (IIS)**.
8. Click **Next**. The **Application Server** panel opens.
9. Click **Next**. The **Select Role Services** panel opens.
10. Select **Web Server (IIS) Support**. You will be prompted to **Add role serves and features required for Web Server (IIS) Support?**
11. Click **Add Required Role Services**.
12. Back on the **Select Role Services** panel, click **Next**. The **Web Server (IIS)** panel opens.
13. Click **Next**. The **Select Role Services** panel opens.
14. Select **IIS 6 Management Compatibility** (and all of its subentries).
15. Click **Next**. The **Confirm Installation Selections** panel opens.
16. Click **Install**. The **Installation Progress** panel opens. When installation is complete, the **Installation Results** panel opens.
17. Click **Close**. You are now ready to run the Workflow Manager / AdminStudio Enterprise Server installer.

Port Requirements for Integration

If you are configuring an integrated solution between AdminStudio, FlexNet Manager Platform, App Portal, and Workflow Manager, you need to open certain ports on firewalls between the products to enable them to communicate with each other. This section serves as a reference for the ports that the products use, and it can be used as a basis for configuring firewall rules.

Table 2-5 • Port Requirements for Integration

Target Program	Originating Program(s)	Target Program Uses These Ports
Active Directory	AdminStudio App Portal Workflow Manager Flexera Service Gateway FlexNet Manager Platform	See the following article in the Microsoft TechNet Library: Active Directory and Active Directory Domain Services Port Requirements at http://technet.microsoft.com/en-us/library/dd772723(v=WS.10).aspx
App Portal	AdminStudio	80
Flexera Service Gateway	AdminStudio App Portal Workflow Manager FlexNet Manager Platform	9443 8280

Table 2-5 • Port Requirements for Integration (cont.)



Target Program	Originating Program(s)	Target Program Uses These Ports
FlexNet Manager Platform	AdminStudio	80
	App Portal	443
		8889
System Center Configuration Manager	AdminStudio	9 (Wake on LAN)
	App Portal	67, 68 (DHCP)
		69 (TFTP)
		80 (HTTP)
		135 (RPC)
		389 (LDAP)
		443 (HTTPS)
		445 (Server Message Block, SMB)
		636 (LDAP SSL)
		2701 (Remote Control)
		3268 (LDAP Global Catalog)
		3269 (LDAP Global Catalog SSL)
		3389 (Remote Assistance)
		4011 (BINL)
		5985 (Windows Remote Management HTTP)
	5986 (Windows Remote Management HTTPS)	
	8530, 8531 (HTTP and HTTPS)	
	10123 (Client Notification)	
	16993 (Power control, provisioning, and discovery)	
	16995 (Serial over LAN and IDE redirection)	
	25536 (Wake-up proxy)	
		
<p>Note • For more information, see the following article in the Microsoft TechNet Library: <i>Technical Reference for Ports Used in Configuration Manager</i> at http://technet.microsoft.com/en-us/library/hh427328.aspx</p>		
SCCM File Share Server	AdminStudio	445 (Server Message Block, SMB)

Table 2-5 • Port Requirements for Integration (cont.)

Target Program	Originating Program(s)	Target Program Uses These Ports
SMTP Server	AdminStudio	25
	Workflow Manager	
	Flexera Service Gateway	
	FlexNet Manager Platform	
SQL Server	AdminStudio	1433 (SQL Server Service)
	App Portal	1434 (SQL Server Browser)
	Workflow Manager	4022 (SQL Server Service Broker)
	FlexNet Manager Platform	
<p>Note • If SQL Server is configured to listen on an alternate port, make sure the firewall allows communication on that port.</p>		
Workflow Manager	AdminStudio	80

Installing AdminStudio 2018

Instructions for installing AdminStudio is presented in the following sections:

Table 3-1 • Installing AdminStudio

Topic	Description
Installing AdminStudio	Explains how to install AdminStudio using the installation wizard and also how to install it via command line.
Upgrading an Existing Application Catalog to AdminStudio 2018	Explains how to upgrade an existing Application Catalog to AdminStudio 2018 using either the AdminStudio user interface or by using scripts.

Installing AdminStudio

You can install AdminStudio 2018 either by using the installation wizard or silently via command line.

- [Installing AdminStudio Using the Installation Wizard](#)
- [Installing AdminStudio Silently Via Command Line](#)

Installing AdminStudio Using the Installation Wizard

To install AdminStudio using the installation wizard, perform the following steps.



Task

To install AdminStudio:

1. Launch the AdminStudio installation program. The **Welcome** panel opens.
2. Click **Next**. The **License Agreement** panel opens.

3. Select the **I accept the terms in the license agreement** option and click **Next**. The **Destination Folder** panel opens.
4. If you want to install AdminStudio in the specified directory, click **Next**. If you want to select a different directory, click **Change**, select a new directory, and then click **Next**. The **AdminStudio Shared Location** panel opens.

The AdminStudio Shared directory contains shared information for repackaging, best practices testing, conflict identification, and other AdminStudio functions, including the following:

- The Shared AdminStudio.ini file, which specifies default Application Catalog database settings
- Application Manager duplicate package identifier options
- Repackager isrepackager.ini exclusion list
- OS Snapshot issnapshot.ini file
- User-defined ACE rules
- Distribution Wizard Distribution Type templates and .ini files

If you are working in a team environment, the AdminStudio Shared directory should be set to a centralized network location, accessible by all AdminStudio users at your organization, rather than on your local machine.

5. Specify the location of your organization's AdminStudio Shared directory, and click **Next**. The **Setup Type** panel opens.
6. Select one of the following options to specify which components you want to install on this machine:
 - **Typical**—Select this option to install all client tool program features of AdminStudio including InstallShield Editor.
 - **Custom**—Select this option if you want to open an additional panel where you can select whether you want to install just the AdminStudio tools or just InstallShield Editor.
7. Do one of the following:
 - **If you clicked Typical in the previous step**, the **Installing AdminStudio 2018** panel opens and installation begins. Skip to [Step 9](#).
 - **If you selected Custom**, click **Next** and continue with [Step 8](#). The **Custom Setup** panel opens.
The **Custom Setup** panel lists the available program features of AdminStudio.
8. Select the AdminStudio features that you want to install and then click **Install**. The **Installing AdminStudio 2018** panel opens and the installation process begins.
9. When installation is complete, the **Completed** panel opens. Click **Finish** to exit the wizard.
10. Proceed with one of the following:
 - [Activating AdminStudio \(Full Edition\) Upon Initial Startup](#)
 - [Evaluating AdminStudio Enterprise Edition Client Tools](#)



Note • When you launch AdminStudio for the first time, you may be prompted to install the AdminStudio Service Packs. Follow the prompts to install all recommended Service Packs.

Installing AdminStudio Silently Via Command Line

The AdminStudio installer was created using an InstallShield “Suite” project type, which means that the procedure for installing AdminStudio silently is different from previous releases, which were created using a “Basic MSI” project type.

To install AdminStudio 2018 silently, you need to use the `ASCommandLine` property to pass standard MSI parameters to the AdminStudio installer (`AdminStudio2018.exe`), along with the `/silent` switch:

```
AdminStudio2018.exe /silent ASCommandLine="[Parameters]"
```

For example:

```
AdminStudio2018.exe /silent ASCommandLine="TRANSFORMS=MyTransform.mst"
```

The AdminStudio installer uses the following command line parameters:

Table 3-2 • AdminStudio Installer Command Line Parameters

Parameter	Description
<code>ASCommandLine</code>	Use to pass any MSI property (except for <code>ISInstallDir</code> , <code>SharedInstallDir</code> , or <code>PRODUCTID</code>) to the AdminStudio installer. Below are examples: <code>AdminStudio2018.exe /silent ASCommandLine="TRANSFORMS=MyTransform.mst"</code>
<code>ISCommandLine</code>	Use to pass any MSI property to the InstallShield Editor installer (which is automatically launched during AdminStudio installation). Using this parameter enables you to install InstallShield Editor in a different directory than AdminStudio. For example: <code>AdminStudio2018.exe /silent ISCommandLine="INSTALLDIR=D:\MyISDirectory"</code>
<code>ISInstallDir</code>	Use to specify the AdminStudio installation directory: <code>AdminStudio2018.exe /silent ISInstallDir="C:\Program Files\MyInstallLocation"</code>
<code>SharedInstallDir</code>	Use to specify the AdminStudio Shared directory: <code>AdminStudio2018.exe /silent SharedInstallDir="\\netshare18\MySharedLocation"</code>
<code>PRODUCTID</code>	Use to specify the AdminStudio activation code: <code>AdminStudio2018.exe /silent PRODUCTID="xxxx-xxxx-xxxx-xxxx"</code>
<code>/silent</code>	In order to install AdminStudio silently, you must use <code>/silent</code> switch: <code>AdminStudio2018.exe /silent</code>



Important • When installing AdminStudio silently on a Windows 7 or Windows 2008 R2 machine, the machine is automatically rebooted after successful installation.

Upgrading an Existing Application Catalog to AdminStudio 2018

Upgrading an existing Application Catalog to AdminStudio 2018 is a two step process. You first need to use the user interface or run scripts to upgrade the database. Then you need to change the Application Catalog database's collation setting to SQL_Latin1_General_CP1_CI_AS.

- [Upgrading an Application Catalog](#)
- [Changing the Database Collation of the Upgraded Application Catalog](#)

Upgrading an Application Catalog

You can upgrade an existing Application Catalog to AdminStudio 2018 either by opening it in the AdminStudio user interface or by running scripts.

- [Upgrading an Application Catalog Using the User Interface](#)
- [Upgrading an Application Catalog Manually Using Scripts](#)

Upgrading an Application Catalog Using the User Interface

When you attempt to open an AdminStudio 5.x or later SQL Server Application Catalog in the AdminStudio 2018 interface, you are prompted to upgrade the Application Catalog to the latest AdminStudio schema. This section explains this procedure.



Important • Before you upgrade the Application Catalog database from a previous AdminStudio version, it is strongly recommended that you create a backup of the original database. This is a standard precaution that is recommended to prevent possible data loss. If you are using the Application Catalog Software Repository feature, you may also want to make a backup copy of your Software Repository directories before upgrading.

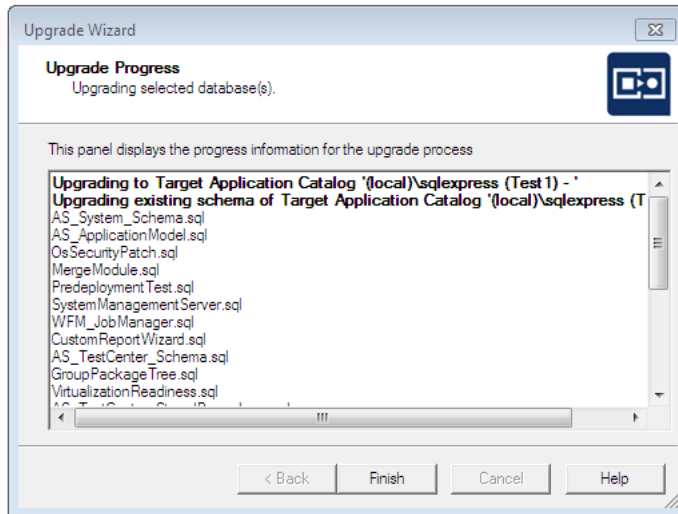


Task

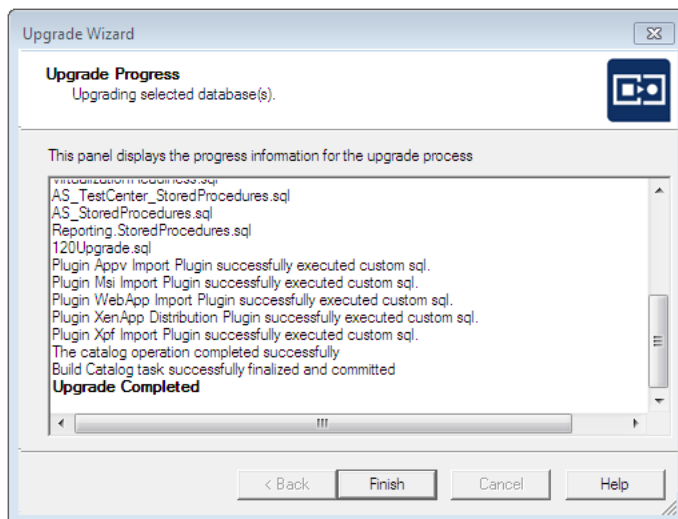
To upgrade an existing Application Catalog:

1. Install AdminStudio, as described in [Installing AdminStudio](#).
2. Launch Application Manager.
3. On the Application Manager tab menu, select **Connect**. The **Connect Application Catalog** dialog box opens.
4. Open the **Standalone** tab. The **Standalone** tab opens, prompting you to enter database connection information.
5. If you want this Application Catalog to be the default shared Application Catalog used in your organization, select the corresponding option at the bottom of the dialog box.
6. Select the **Server** where the Application Catalog is stored.
7. Specify how the database server should verify the authenticity of the login—either using **Windows Authentication** or **Server Authentication**. If you selected **Server Authentication**, enter the appropriate **Login ID** and **Password**.
8. In the **Catalog** box, enter the name of the Application Catalog you want to open.

9. Click **Test** to test the connection to the database.
10. Click **OK**. A message opens stating that the Application Catalog needs to be upgraded, and asking Do you want to upgrade now?.
11. Click **Yes**. The **Welcome** panel of the Upgrade Wizard opens.
12. Click **Next**. The **Upgrade Progress** panel opens and the upgrade begins.



When the upgrade is complete, the message Upgrade Completed is listed, and the **Finish** button is enabled.



13. Click **Finish**. The upgrade is now complete and all of your Application Catalog data has been preserved.



Note • When an SQL Server Application Catalog database is upgraded, the old tables are not dropped from the Application Catalog.

Upgrading an Application Catalog Manually Using Scripts

Rather than opening an Application Catalog in the AdminStudio user interface, you can use scripts to upgrade an existing database.



Important • This is an advanced method of upgrading a database which requires running scripts manually on a database server.



Task To upgrade an existing Application Catalog database:

1. Open the CSSYSSCHEMAINFO table of your existing Application Catalog database, and locate the record with the highest **SchemaVersion** value. This is the **SchemaVersion** that you are upgrading from.
2. Locate the same **SchemaVersion** number in the table below, and note the corresponding **Product Version** number.
3. Run all of the scripts listed in the **Scripts to Run** column for that **Product Version**, in order.
4. Next, run all of the scripts listed in the **Scripts to Run** column for subsequent product versions. If a script listed in a subsequent product version has already been run, it does not need to be run again.

For example, if you are upgrading from **SchemaVersion** 13286609, first run all of the scripts in the **14.0** row of the table, and then run all of the scripts in the **14.01** row of the table that have not already been run.

Product Version (SchemaVersion) Upgrading From	Product Version Upgrading To	Scripts to Run
12.00 (13286602)	12.01	1201Upgrade.sql
12.01 (13286603)	12.02	DarwinFixes.sql 1202Upgrade.sql 1202UpgradeWFM.sql 1202UpgradeWFEmailTemplate1.sql 1202UpgradeWFEmailTemplate2.sql

Product Version (SchemaVersion) Upgrading From	Product Version Upgrading To	Scripts to Run
12.02 (13286605)	13.00	AS_System_Schema.sql AS_ApplicationModel.sql OsSecurityPatch.sql MergeModule.sql PredeploymentTest.sql SystemManagementServer.sql WFM_JobManager.sql AS_TestCenter_Schema.sql CustomReportWizard.sql AS_StoredProcedures.sql VirtualizationReadiness.sql GroupPackageTree.sql AS_TestCenter_StoredProcedures.sql Reporting.StoredProcedures.sql ApplicationExtendedAttributes.sql MobileTables.sql MobileProgrammability.sql 1300Upgrade.sql MobileSeedDataEUCIID.sql 1301UpgradeWFM.sql 1302UpgradeWFM.SQL You also need to run any SQL scripts that are found in the Common\Plugins directory. The following plug-in scripts are shipped with the product: AirWatch.sql Altiris.sql AppV.sql AppvServer.sql Msi.sql XenApp.sql Xpf.sql

Product Version (SchemaVersion) Upgrading From	Product Version Upgrading To	Scripts to Run
13.00 (13286607)	14.00	<p>AS_System_Schema.sql AS_ApplicationModel.sql OsSecurityPatch.sql MergeModule.sql PredeploymentTest.sql SystemManagementServer.sql WFM_JobManager.sql AS_TestCenter_Schema.sql CustomReportWizard.sql AS_StoredProcedures.sql VirtualizationReadiness.sql AS_UI_Support.sql GroupPackageTree.sql AS_TestCenter_StoredProcedures.sql Reporting.StoredProcedures.sql ApplicationExtendedAttributes.sql MobileTables.sql MobileProgrammability.sql 1400Upgrade.sql DARSchemaUpdate.sql</p> <p>You also need to run any SQL scripts that are found in the Common\Plugins directory. The following plug-in scripts are shipped with the product:</p> <p>AirWatch.sql Altiris.sql AppV.sql AppvServer.sql Msi.sql XenApp.sql Xpf.sql</p>

Product Version (SchemaVersion) Upgrading From	Product Version Upgrading To	Scripts to Run
14.0 (13286609)	14.01	AS_System_Schema.sql AS_ApplicationModel.sql OsSecurityPatch.sql MergeModule.sql PredeploymentTest.sql SystemManagementServer.sql WFM_JobManager.sql AS_TestCenter_Schema.sql CustomReportWizard.sql AS_StoredProcedures.sql VirtualizationReadiness.sql AS_UI_Support.sql GroupPackageTree.sql AS_TestCenter_StoredProcedures.sql Reporting.StoredProcedures.sql ApplicationExtendedAttributes.sql MobileTables.sql MobileProgrammability.sql AS_ShimDB_Schema.sql AS_ShimDB_SeedData.sql 1401Upgrade.sql 1401UpgradeWFM.sql 1401UpgradeAIR.sql 1401UpgradeAIRProjectData.sql You also need to run any SQL scripts that are found in the Common\Plugins directory. The following plug-in scripts are shipped with the product: AirWatch.sql Altiris.sql AppV.sql AppvServer.sql Msi.sql WebDeploy.sql XenApp.sql Xpf.sql

Product Version (SchemaVersion) Upgrading From	Product Version Upgrading To	Scripts to Run
14.01 (13286611)	15.00	<p>AS_System_Schema.sql AS_ApplicationModel.sql OsSecurityPatch.sql MergeModule.sql PredeploymentTest.sql SystemManagementServer.sql WFM_JobManager.sql AS_TestCenter_Schema.sql CustomReportWizard.sql AS_StoredProcedures.sql VirtualizationReadiness.sql AS_UI_Support.sql GroupPackageTree.sql AS_TestCenter_StoredProcedures.sql Reporting.StoredProcedures.sql ApplicationExtendedAttributes.sql MobileTables.sql MobileProgrammability.sql 1500Upgrade.sql 1500UpgradeWFM.sql 1500UpgradeAIR.sql</p> <p>You also need to run any SQL scripts that are found in the Common\Plugins directory. The following plug-in scripts are shipped with the product:</p> <p>AirWatch.sql Altiris.sql ApkDeepLink.sql AppV.sql AppV5Conversion.sql AppvServer.sql AutomatedApplicationConverter.sql Casper.sql IpaDeepLink.sql Msi.sql WebDeploy.sql XenApp.sql Xpf.sql</p>

Product Version (SchemaVersion) Upgrading From	Product Version Upgrading To	Scripts to Run
15.0 (13286613)	15.01	AS_System_Schema.sql AS_ApplicationModel.sql OsSecurityPatch.sql MergeModule.sql PredeploymentTest.sql SystemManagementServer.sql WFM_JobManager.sql AS_TestCenter_Schema.sql CustomReportWizard.sql AS_StoredProcedures.sql VirtualizationReadiness.sql AS_UI_Support.sql GroupPackageTree.sql AS_TestCenter_StoredProcedures.sql Reporting.StoredProcedures.sql ApplicationExtendedAttributes.sql MobileTables.sql MobileProgrammability.sql AS_ShimDB_Schema.sql AS_ShimDB_SeedData.sql 1500UpgradeGalileoFix.sql 1501Upgrade.sql 1501UpgradeWFM.sql 1500UpgradeGalileoAIRFix.sql 1501UpgradeAIR.sql You also need to run any SQL scripts that are found in the Common\Plugins directory. The following plug-in scripts are shipped with the product: AirWatch.sql Altiris.sql ApkDeepLink.sql AppV.sql AppV5Conversion.sql AppvServer.sql AutomatedApplicationConverter.sql Casper.sql IpaDeepLink.sql Msi.sql WebDeploy.sql XenApp.sql Xpf.sql

Product Version (SchemaVersion) Upgrading From	Product Version Upgrading To	Scripts to Run
15.01 (13286615)	15.02	<p>AS_System_Schema.sql AS_ApplicationModel.sql OsSecurityPatch.sql MergeModule.sql PredeploymentTest.sql SystemManagementServer.sql WFM_JobManager.sql AS_TestCenter_Schema.sql CustomReportWizard.sql AS_StoredProcedures.sql VirtualizationReadiness.sql AS_UI_Support.sql GroupPackageTree.sql AS_TestCenter_StoredProcedures.sql Reporting.StoredProcedures.sql ApplicationExtendedAttributes.sql MobileTables.sql MobileProgrammability.sql AS_ShimDB_Schema.sql AS_ShimDB_SeedData.sql 1502Upgrade.xml</p> <p>You also need to run any SQL scripts that are found in the Common\Plugins directory. The following plug-in scripts are shipped with the product:</p> <p>AirWatch.sql Altiris.sql ApkDeepLink.sql AppV.sql AppV5Conversion.sql AppvServer.sql AutomatedApplicationConverter.sql Casper.sql IpaDeepLink.sql Msi.sql WebDeploy.sql XenApp.sql Xpf.sql</p>



Note • All of the information in this table can be found in the *Upgrade.xml* file, which is installed in the Support subdirectory of the AdminStudio installation directory. This file also includes information on upgrading from versions prior to version 12.0 (AdminStudio 2013).

Changing the Database Collation of the Upgraded Application Catalog

Generally, an Application Catalog database obtains its collation setting from the SQL Server collation setting, unless one specifies a different collation setting. Therefore, if an SQL Server is running with the collation setting of `Latin1_General_CI_AS`, then any database created on this SQL Server will have the collation setting of `Latin1_General_CI_AS` by default.

However, AdminStudio 2018 requires the database collation to be `SQL_Latin1_General_CP1_CI_AS`. If a new Application Catalog is created using AdminStudio 2018, that Application Catalog database is created with the correct collation setting, irrespective of the SQL Server collation setting. However, if you upgrade an Application Catalog database from a previous version to the AdminStudio 2018 schema using the Upgrade Wizard or using scripts, the collation setting is not changed, so you must perform the steps below to change it.



Note • In the United States, the default collation for any SQL Server is `SQL_Latin1_General_CP1_CI_AS`. However, in other geographies such as the United Kingdom and Europe, the default collation is set to something else. Therefore, this topic is more relevant to users located in geographies outside of the United States.



Important • If the collation setting of an AdminStudio 2018 Application Catalog is not set to the correct collation setting, you will be able to connect to it, but it will cause Application Manager to periodically crash. An error message such as the following will appear in the log file (`ISCMIDE.Log`):

'Exception 'System.Data.SqlClient.SqlException (0x80131904): Cannot resolve the collation conflict between "Latin1_General_CI_AS" and "SQL_Latin1_General_CP1_CI_AS" in the equal to operation.'

To change the collation setting of an AdminStudio 2018 Application Catalog database to `SQL_Latin1_General_CP1_CI_AS`, perform the following steps:



Task

To change the collation setting of an AdminStudio 2018 Application Catalog database:

1. Download the following ZIP file and extract the files to a temporary folder:
<http://helpnet.flexerasoftware.com/adminstudiocc/CollationChange.zip>
2. Open SQL Management Studio and run the `Pre_Collation_Change.sql` file against the AdminStudio 2018 Application Catalog database.
3. Open the `Collation_Change.sql` file in an editor and replace the `AS_DATABASE_NAME` string with the name of the Application Catalog database that you are upgrading.
4. Run the `Collation_Change.sql` file against the AdminStudio 2018 Application Catalog database.
5. Run the `Post_Collation_Change.sql` file against the AdminStudio 2018 Application Catalog database.

The collation setting of the AdminStudio 2018 Application Catalog database will now have been changed to `SQL_Latin1_General_CP1_CI_AS`.

4

Installing AdminStudio 2018 Limited Editions

This chapter explains how to install the AdminStudio Limited Editions:

- [Installing AdminStudio 2018 ZENworks Edition](#)
- [Installing AdminStudio 2018 Limited Edition for LANDesk Management Suite](#)

Installing AdminStudio 2018 ZENworks Edition

To install AdminStudio 2018 ZENworks Edition, perform the following steps.



Task

To install AdminStudio ZENworks Edition:

1. Launch the AdminStudio ZENworks Edition installation program. After the installation files are extracted, the **Welcome** panel for the **InstallShield Wizard for AdminStudio ZENworks Edition** opens.



Note • Before the installer opens, you may be prompted to install Microsoft ReportViewer 2010.

2. Click **Next**. The **License Agreement** panel opens.
3. Select the **I accept the terms in the license agreement** option and click **Next**. The **Destination Folder** panel opens.
4. If you want to install AdminStudio in the specified directory, click **Next**. If you want to select a different directory, click **Change**, select a new directory, and then click **Next**. The **AdminStudio Shared Location** panel opens.

The AdminStudio Shared directory contains shared information for repackaging and conflict identification, and other AdminStudio functions. If you are working in a team environment, the AdminStudio Shared directory should be set to a centralized network location, accessible by all AdminStudio users at your organization, rather than on your local machine.

5. Specify the location of your organization's AdminStudio Shared directory, and click **Next**. The **Setup Type** panel opens.

6. Select one of the following options to specify which components you want to install on this machine:
 - **Typical**—Select this option to install all client tool program features of AdminStudio including InstallShield Editor.
 - **Custom**—Select this option if you want to open an additional panel where you can select whether you want to install just the AdminStudio tools or just InstallShield Editor.
7. Do one of the following:
 - **If you clicked Typical in the previous step**, the **Installing AdminStudio ZENworks Edition** panel opens and installation begins. Skip to [Step 9](#).
 - **If you selected Custom**, click **Next** and continue with [Step 8](#). The **Custom Setup** panel opens, listing two options:
 - **AdminStudio Client and Tools**—Installs the AdminStudio user interface and tools, such as Repackager, Application Manager, and Distribution Wizard.
 - **InstallShield Editor**—Installs InstallShield Editor.
8. Click one of the two options. The **Installing AdminStudio ZENworks Edition** panel opens and the installation process begins.
9. When installation is complete, the **Completed** panel opens. Click **Finish** to exit the wizard.
10. Proceed with one of the following:
 - [Activating AdminStudio ZENworks Edition](#)
 - [Evaluating AdminStudio Enterprise Edition Client Tools](#)



Note • When you launch AdminStudio for the first time, you may be prompted to install the AdminStudio Service Packs. Follow the prompts to install all recommended Service Packs.

Installing AdminStudio 2018 Limited Edition for LANDesk Management Suite

To install AdminStudio 2018 Limited Edition for LANDesk Management Suite, perform the following steps.



Task

To install AdminStudio 2018 Limited Edition for LANDesk Management Suite:

1. Launch the AdminStudio 2018 Limited Edition for LANDesk Management Suite installation program. After the installation files are extracted, the **Welcome** panel of the InstallShield Wizard opens.



Note • Before the installer opens, you may be prompted to install Microsoft ReportViewer 2010.

2. Click **Next**. The **License Agreement** panel opens.
3. Select the **I accept the terms in the license agreement** option and click **Next**. The **Destination Folder** panel opens.
4. If you want to install AdminStudio in the specified directory, click **Next**. If you want to select a different directory, click **Change**, select a new directory, and then click **Next**. The **AdminStudio Shared Location** panel opens.

The AdminStudio Shared directory contains shared information for repackaging and conflict identification, and other AdminStudio functions. If you are working in a team environment, the AdminStudio Shared directory should be set to a centralized network location, accessible by all AdminStudio users at your organization, rather than on your local machine.

5. Specify the location of your organization's AdminStudio Shared directory, and click **Next**. The **Setup Type** panel opens.
6. You can choose to evaluate the AdminStudio Limited Edition for LANDesk Management Suite for 45 days. The choice that you make on the **Setup Type** panel affects the tools that are available to you if you choose to evaluate the product. Select one of the following options:
 - **Complete**—Choose this option to install all of the AdminStudio Enterprise Edition client tools, which enables you to evaluate these tools during your 45-day evaluation period. After the evaluation period ends and you enter your AdminStudio Limited Edition for LANDesk Management Suite activation code, only those tools included in the Limited Edition will be available to you.
 - **Typical**—Choose this option to install only the tools included in this Limited Edition.

After you click **Complete** or **Typical**, the **Installing** panel opens and installation begins.

When installation is complete, the **Completed** panel opens.

7. Click **Finish** to close the wizard.
8. Proceed with one of the following:
 - [Registering and Activating AdminStudio Limited Edition for LANDesk Management Suite](#)
 - [Evaluating AdminStudio](#)

5

Activating AdminStudio

AdminStudio product activation requires you to obtain a valid activation code for one of the Full Editions (Standard, Professional, or Enterprise) or Limited Editions (ZENworks Limited Edition, or Limited Edition for LANDesk Management Suite) of AdminStudio, and, in some cases, to register that activation code on the AdminStudio Web site. This chapter includes the following topics to assist you with activating your product:

- [About Activation](#)
- [Activating AdminStudio \(Full Edition\) Upon Initial Startup](#)
- [Activating AdminStudio ZENworks Edition](#)
- [Registering and Activating AdminStudio Limited Edition for LANDesk Management Suite](#)
- [Activation Troubleshooting](#)



Note • The length of the evaluation period of AdminStudio varies by Edition, as described below. See [Evaluating AdminStudio](#) for more information.

- **Limited Edition for ZENworks Management Suite**—You can choose to evaluate the AdminStudio Enterprise Edition client tools for 60 days without entering a activation code and activating the product.
- **Limited Edition for LANDesk Management Suite**—You can choose to evaluate the AdminStudio client tools for 45 days prior to activating it. The tools available to you during the evaluation mode depends upon the selection you made on the **Setup Type** panel of the AdminStudio Limited Edition for LANDesk Management Suite installation: **Typical** or **Complete**.

About Activation

AdminStudio product activation requires you to obtain a valid activation code for one of the Editions of AdminStudio, and, in some cases, to register that activation code on the AdminStudio Web site.

- [About Activation Codes](#)
- [About Registration](#)

When you launch AdminStudio or one of its tools for the first time, you are notified that you are using a time-limited trial version, and you are given the opportunity to evaluate the product or to activate it by entering a valid activation code for an AdminStudio Edition.

- **You have purchased AdminStudio**—If you have purchased AdminStudio and have received an activation code (for the Standard, Professional, or Enterprise Edition), select **Activate or Purchase AdminStudio** and click **Next**. See [Activating AdminStudio \(Full Edition\) Upon Initial Startup](#).
- **You want to evaluate AdminStudio**—If you have not yet purchased AdminStudio, but want to evaluate it for 21 days, select **Continue to Evaluate AdminStudio** and click **Next** (or just wait ten seconds). The product will launch. See [Evaluating AdminStudio](#) for more information.

About Activation Codes

Your activation code is a 16-digit number which follows a 4-sets-of-4-characters format, including dashes:

XXXX-XXXX-XXXX-XXXX

After you purchase AdminStudio, you obtain a activation code via email. If you cannot find your activation code, call your AdminStudio customer service representative.

About Registration

If you have purchased your software from a reseller (instead of directly from Flexera Software), you will be required to open the Flexera Software Registration page and enter a serial number that you received from the reseller. You will then receive an email from Flexera Software that contains the activation code/serial number that you will use to activate AdminStudio. For more information, see [Activating AdminStudio Purchased from a Reseller](#).

Activating AdminStudio (Full Edition) Upon Initial Startup

The steps you take to activate AdminStudio the first time you open it depend upon whether you purchased AdminStudio directly from Flexera Software or from a Reseller.

- [Activating AdminStudio Purchased from Flexera Software](#)
- [Activating AdminStudio Purchased from a Reseller](#)

Activating AdminStudio Purchased from Flexera Software

If you purchased AdminStudio directly from Flexera Software and want to activate it upon initial start up, perform the following steps.



Task **To register and activate AdminStudio:**

1. Locate your activation code, which you should have received via email.
2. Launch AdminStudio. A dialog box opens, stating that you are using a time-limited trial version.
3. Select **Activate or Purchase AdminStudio** and click **Next**. You are prompted to **Enter Your Activation Code**.
4. Enter the activation code of the edition you purchased and click the **Activate** button. After a few seconds, you will receive a message that activation was successful.
5. Click **Finish**. AdminStudio will launch.

Your product would then be fully activated and you would be able to use all of the tools that are included in the Edition of AdminStudio that you purchased.



Note • If you do not have an online connection, you can activate your product via a web page. See [Activating Through a Web Page](#).



Note • For information on how to configure AdminStudio to get license information from a FLEXnet license server, see the *FLEXnet License Server for AdminStudio Installation Guide*.



Note • When you launch AdminStudio for the first time, you may be prompted to install the AdminStudio Service Packs. Follow the prompts to install all recommended Service Packs.

Activating AdminStudio Purchased from a Reseller

If you purchased AdminStudio from a reseller and want to activate it, perform the following steps.



Task **To register and activate AdminStudio:**

1. Open the Flexera Software Registration Page at the following address:

<http://flexerasoftware.force.com/register>

The Flexera Software Registration Page opens.

2. Select one of the following options to indicate what you are registering:

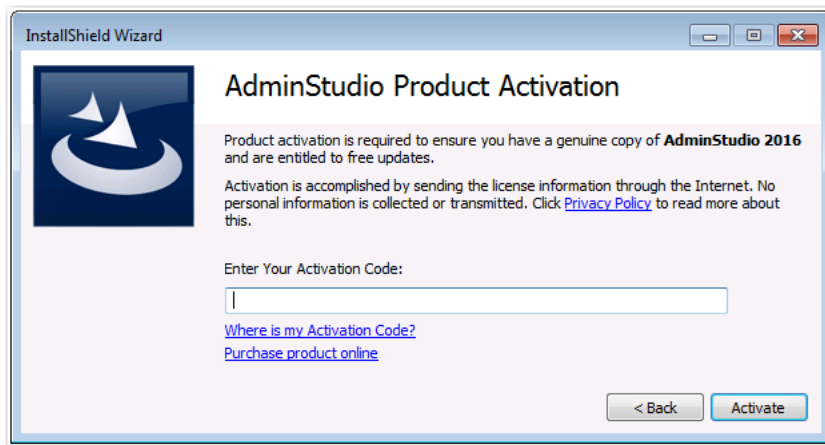
- **Product**
- **Support maintenance**
- **Both product and maintenance support**

When you select one of these options, the **Product Serial Number** and possibly the **Maintenance Serial Number** fields are displayed.

3. Enter the serial number(s) that were provided by the reseller and click **Add**.
4. Enter the requested information until the registration process is complete.

When you have completed registration, you will receive an email from Flexera Software confirming your successful Flexera Software registration. This email will also include a **Product Serial Number**.

5. Launch AdminStudio. A dialog box opens, stating that you are using a time-limited trial version.
6. Select **Activate or Purchase AdminStudio** and click **Next**. You are prompted to **Enter Your Activation Code**.



7. In the **Enter Your Activation Code** field, enter the **Product Serial Number** that was listed in the email that you received from Flexera Software and click **Verify**. First, a message appears stating that the activation code is being verified, and then the message **Verification Complete** appears.
8. Click **Finish**. AdminStudio will launch.

Your product would then be fully activated and you would be able to use all of the tools that are included in the Edition of AdminStudio that you purchased.



Note • When you launch AdminStudio for the first time, you may be prompted to install the AdminStudio Service Packs. Follow the prompts to install all recommended Service Packs.



Note • If you do not have an online connection, you can activate your product via a web page. See [Activating Through a Web Page](#).

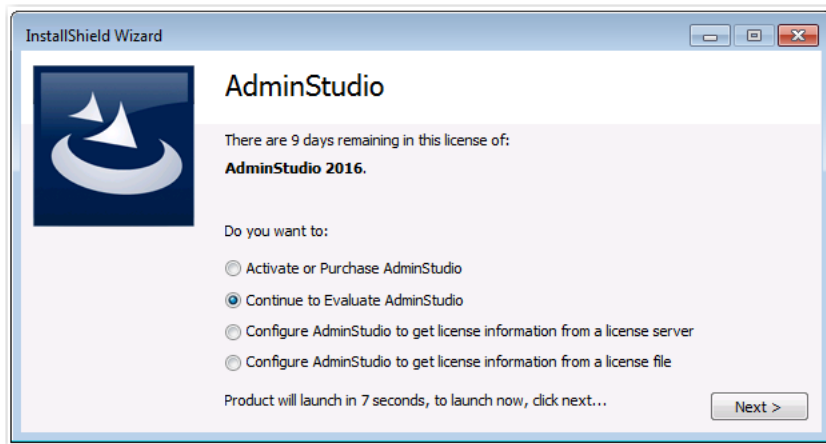
Activating AdminStudio ZENworks Edition

If you want to activate AdminStudio ZENworks Edition, perform the following steps.

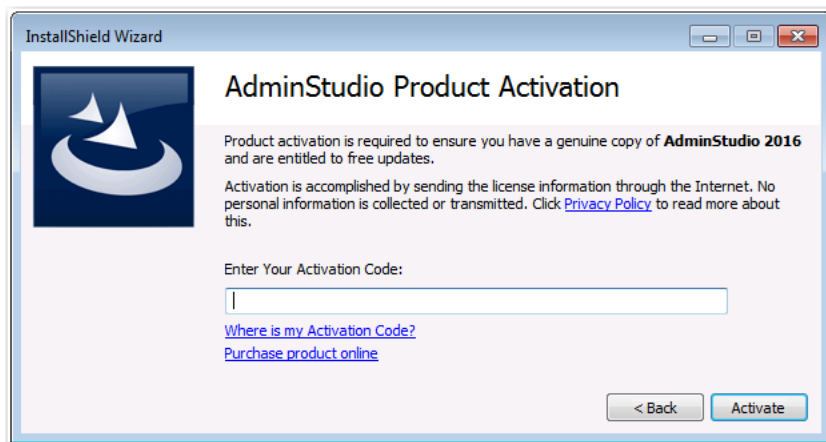


Task **To activate your installation of AdminStudio ZENworks Edition:**

1. Launch AdminStudio ZENworks Edition. The following dialog box opens, prompting you to either activate or evaluate AdminStudio.



2. Select **Activate or Purchase AdminStudio** and click **Next**. The AdminStudio Product Activation dialog box opens, and you are prompted to **Enter Your Activation Code**.

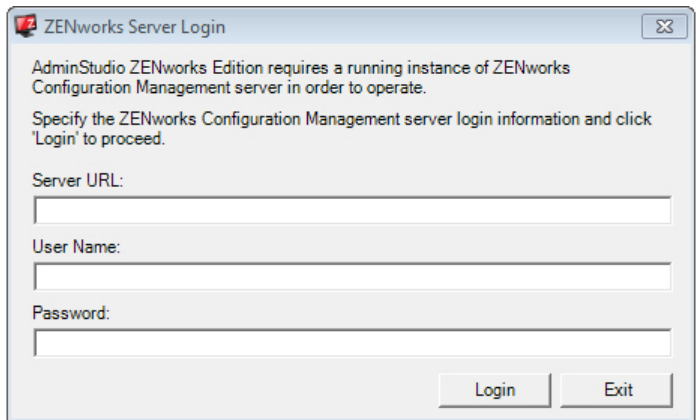


3. Enter the activation code that you received from Novell and click **Activate**. First, a message appears stating that the activation code is being validated, and then the message Activation Complete appears. Your product would then be fully activated and you would be able to use all of the tools that are included in the AdminStudio ZENworks Edition that you have downloaded.




Note • If you do not have a online connection, you can activate your product via a web page. See [Activating Through a Web Page](#).

4. Click **Finish**. AdminStudio launches. You will then be prompted to log in to a ZENworks Configuration Management server on the **ZENworks Server Login** dialog box.



Note • Your organization should have previously installed the ZENworks server and provided you with the appropriate login credentials for that server.

5. Enter the following information:

Field	Description
Server URL	Enter the URL of your organization’s ZENworks Configuration Management server, preceded by <code>http://</code> , such as: <code>http://111.22.33.444</code> You can enter either the server name or the IP address.  Note • Do not use the <code>https://</code> prefix.
User Name Password	Enter the login credentials to login to your ZENworks Configuration Management server.



Tip • After a successful login, you will not be prompted to login again.

6. Click **Login**. AdminStudio ZENworks Edition opens.

Registering and Activating AdminStudio Limited Edition for LANDesk Management Suite

To register and activate AdminStudio Limited Edition for LANDesk Management Suite, perform the following steps.



Important • After you activate AdminStudio Limited Edition for LANDesk Management Suite, it can only be used when the LANDesk Management Suite is already installed. The first time you launch an AdminStudio LANDesk Edition tool, you will be prompted to log in to a LANDesk Management Suite Server. After a successful login, you will not be prompted to login again.



Task *To register and activate your installation of AdminStudio Limited Edition for LANDesk Management Suite:*

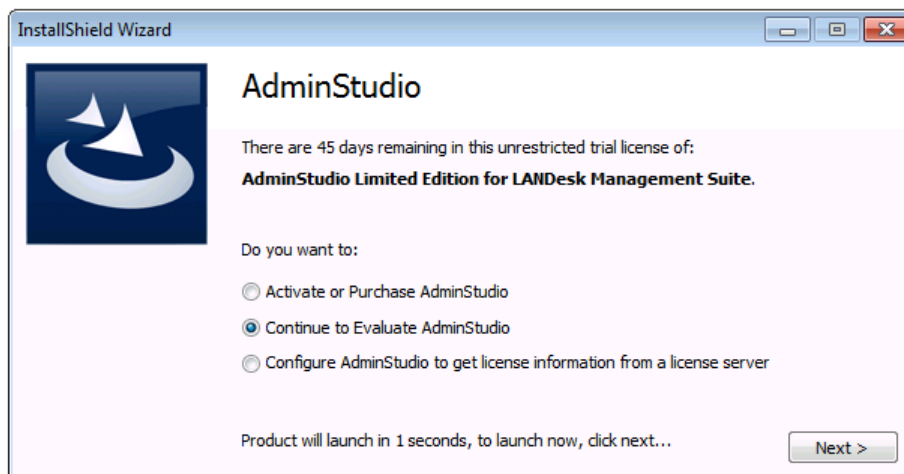
1. When you complete the Limited Edition for LANDesk Management Suite installation, the **AdminStudio Limited Edition for LANDesk Management Suite Activation Code Registration** page opens in a Web browser.



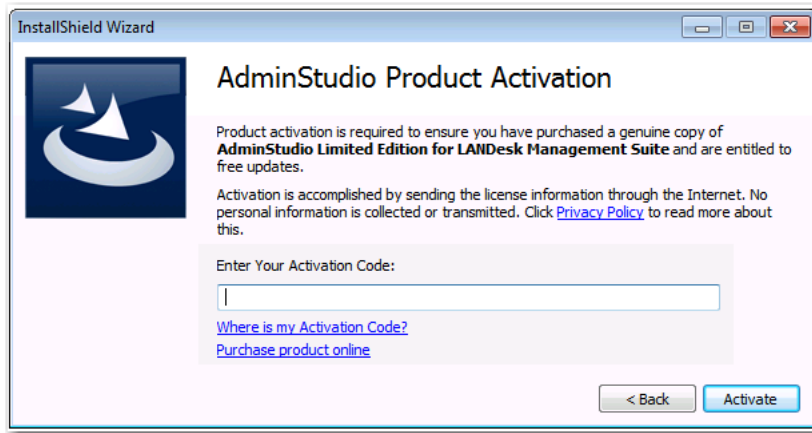
Note • To access this page, you can also go to the following location on the Flexera Software Web site:

http://www.flexerasoftware.com/browser/as_landesk/serial_registration.htm

2. Follow the prompts to complete the registration. When you have completed the registration, your AdminStudio Limited Edition for LANDesk Management Suite activation code will be displayed. You will use this activation code to activate AdminStudio.
3. Copy this activation code into the clipboard. You may also want to save a copy of it in a text file.
4. Launch AdminStudio Limited Edition for LANDesk Management Suite. The following dialog box opens, prompting you to either activate or evaluate AdminStudio.



5. Select **Activate or Purchase AdminStudio** and click **Next**. The AdminStudio Product Activation dialog box opens, and you are prompted to **Enter Your Activation Code**.

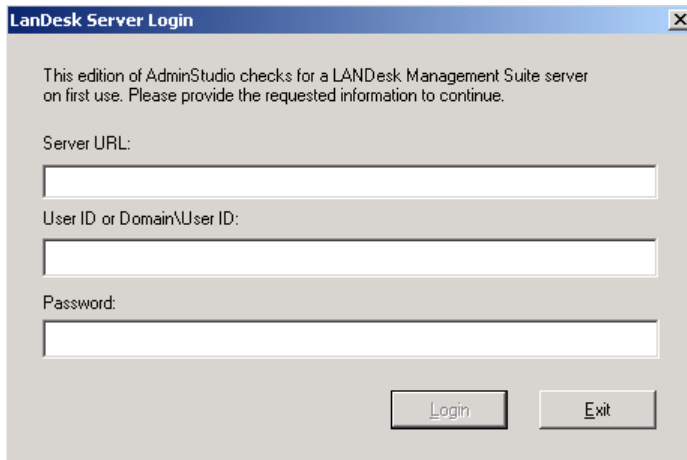


6. Enter your activation code and click **Activate**. First, a message appears stating that the activation code is being validated, and then the message Activation Complete appears. Your product would then be fully activated and you would be able to use all of the tools that are included in the AdminStudio Limited Edition for LANDesk Management Suite.



Note • If you do not have an online connection, you can activate your product via a web page. See [Activating Through a Web Page](#).

7. Click **Finish** to open the tool and begin using it. You will then be prompted to log in to a LANDesk Management Suite server.



Note • Your organization should have previously installed the LANDesk Management Suite server and provided you with the appropriate login credentials for that server. After a successful login, you will not be prompted to login again.

8. Enter the appropriate login credentials for your organization and click **Login**. AdminStudio Limited Edition for LANDesk Management Suite opens.

Activation Troubleshooting

AdminStudio is protected by our own licensing technology in order to ensure the acceptable use of our products on a single and unique machine.

In order to install the full version of AdminStudio, it must first be activated through communication with an activation server. While we have thoroughly tested our license protection, there are some circumstances that could prevent this activation from occurring. The troubleshooting steps in this section should resolve these circumstances.

- [General Troubleshooting](#)
- [Activating Through a Web Page](#)
- [Activating Products Silently](#)
- [Reactivating AdminStudio on a Different Computer](#)

General Troubleshooting

The following troubleshooting steps should resolve most activation issues:

- [General Troubleshooting Steps](#)
- [Virtual Environments](#)
- [Authenticated Proxy Support for Activation](#)

General Troubleshooting Steps

If you are having trouble activating your product, review the following troubleshooting steps:

- **Are you registered?** If you have purchased your software through a reseller, registration of your activation code is required before activation can take place. See [About Registration](#)
- **Disable any firewalls or proxy settings.** Certain firewall and proxy configurations can prevent the Activation Service from communicating with the Flexera Software-hosted activation servers. We recommend temporarily disabling firewalls and proxies while installing and uninstalling in order to allow full communication with our servers. If you are unable to modify these services, then web page activation may be required. See [Activating Through a Web Page](#)
- **Check the activation code.** Confirm that the activation code you are entering is correct, and that it has been entered in the format XXXX-XXXX-XXXX-XXXX (4-4-4-4).
- **Was your product previously activated on another machine?** If your product has been previously activated on another machine, you must first deactivate the license on that machine through a full uninstall before it can be activated on the new machine. Deactivation requires an internet connection to communicate with the server to properly free up a different machine for activation.



Note • For more detailed information about deactivation, please see the following knowledge base article:

[Activation and Deactivation Information for InstallShield and AdminStudio](#)

Virtual Environments

Some known issues with activation relate to virtual environments (VMware, VirtualPC, etc.) and running system restore utilities. It is recommended that AdminStudio be installed on stable systems that are not run in virtual environments and that are not re-imaged frequently.

Authenticated Proxy Support for Activation

AdminStudio 7.5 or later supports authenticated proxies for activation.

Activating Through a Web Page

If you do not have an Internet connection or if you are having problems completing the online activation process, the activation wizard gives you the option of performing offline activation through a self-service Web page (<http://www.installshield.com/offlineactivation>) on a different machine.



Task *To activate AdminStudio through a web page:*

1. Attempt to activate AdminStudio through the Internet. If it cannot be completed, the activation wizard displays a message explaining why it could not occur.
2. Click the **Proceed with offline activation** button. The **Offline Activation** dialog opens. The **Request text** box contains your request text. The request text starts with `<?xml version`, and it ends with `</Request>`.
3. To save the request text to a text file that you can upload from a machine with an Internet connection, click the **Save** button. The wizard lets you save the text as a `.request` file.
4. Visit the Offline Activation Web page (<http://www.installshield.com/offlineactivation>)—a part of the Flexera Software Product and License Center—and follow the instructions to browse to the `.request` file that you saved.

When you click the button on the Offline Activation Web page to submit the activation request and obtain the activation response file (`.xml`), the Web page prompts you for a place to save the `.xml` file. Save it and make it available on the machine on which you initiated the activation process.

5. When you have the activation response file (`.xml`) and you are ready to complete the activation process, launch AdminStudio to open the activation wizard.
6. Proceed to the **Offline Activation** dialog, which has a **Response** text box.
7. Click the **Load** button. The **Open** dialog opens.
8. Browse to the activation response file (`.xml`), and then click the **Open** button. The **Open** dialog closes, and the wizard writes the response text in the **Response text** box. The response text starts with `<?xml version`, and it ends with `</Response>`.



Note • As an alternative for step 8, you can copy the response text to your Clipboard and then use the Paste button to paste the Clipboard contents into the **Response text** box.

9. Click the **Activate** button. The activation wizard activates AdminStudio.



Tip • The aforementioned procedure is also used to perform an offline return of a license.

Activating Products Silently

AdminStudio supports silent activation, enabling you to use public Windows Installer properties to enter the activation code automatically during installation.

To enable silent activation, you need to set the following public Windows Installer properties.

- **PRODUCTID property**—Set the PRODUCTID property to a valid AdminStudio activation code. Enter this number in the following 4-4-4-4 (4 sets of 4 characters) format, including dashes: XXXX-XXXX-XXXX-XXXX.
- **ASACTSTATUS property**—Set the ASACTSTATUS property to 0 to allow the installer to show the status of the activation process as the product is activated, or set it to 1 to perform the activation without showing any status of the activation process.

Activating Silently in a Self-Hosted Environment with a License Server

To activate AdminStudio silently when configuring AdminStudio to use a license server, you need to use a transform file that includes a custom action that runs a command line that specifies the license server name.



Task

To activate AdminStudio silently in a self-hosted environment with a license server:

1. Create a transform file that includes a custom action that runs the following command line:

```
AdminStudioInstallDir\Common\tpsconfig.exe /silent /set_license_server@LICENSE_SERVER
```

For example:

```
tpsconfig.exe /silent /set_license_server@XYZSERVER
```



Note • If you have configured the license server to run on a custom port, put the custom port number before the @ character, such as:

```
tpsconfig.exe /silent /set_license_serverLS_PORT@LICENSE_SERVER
```

```
tpsconfig.exe /silent /set_license_server8300@XYZSERVER
```

2. Use the following command line to install the transform with the AdminStudio installation:

```
AdminStudio2018.exe /silent ASCommandLine="TRANSFORMS=MyTransform.mst"
```

Reactivating AdminStudio on a Different Computer

AdminStudio uses a security technology known as the Activation Service. With this licensing software, the user of the installed product is required to “activate” via communication with a Flexera Software-hosted server. This process enables the product to work on a single, unique computer at a time, while disallowing simultaneous installation on other unauthorized systems.

If, after installing AdminStudio on a computer, you get a new computer or reformat the hard drive on your existing computer and then reinstall AdminStudio on that new computer or reformatted hard drive, the activation code you initially entered will no longer activate AdminStudio. Because you have already used that activation code to activate an installation of AdminStudio, it is now deactivated.

To reactivate your activation code, you need to first deactivate the license on that machine through a full uninstall before it can be activated on the new machine. Deactivation requires an Internet connection to communicate with the server to properly free up a different machine for activation.



Note • *If you are unable to perform a full uninstall of AdminStudio (because, for example, you no longer have the computer you originally installed AdminStudio on), you need to contact AdminStudio Sales to have them authorize a new activation.*

6

Upgrading Your Product Edition

If you originally purchased AdminStudio Standard or Professional Edition, or if you are using a Limited Edition, and want to upgrade to a higher Edition, an upgrade feature has been built-in to AdminStudio that allows you to activate features in a higher Edition without re-installing the application.

To upgrade your product edition, perform the following steps:

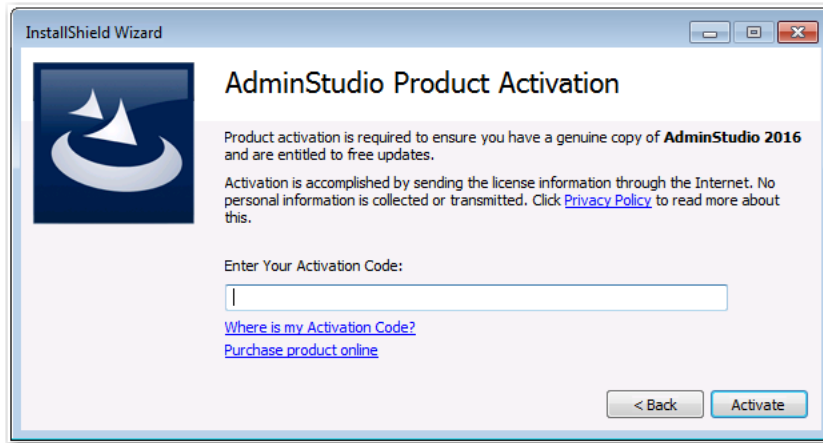


Task**To upgrade your AdminStudio Edition:**

1. Contact an AdminStudio sales representative and purchase a activation code for the edition that you want to upgrade to.
2. Launch AdminStudio or Application Manager.
3. Do one of the following:
 - On the AdminStudio **Help** menu, click **About AdminStudio**.
 - On the Application Manager **Support** tab, click **About Application Manager**.

The AdminStudio or Application Manager About dialog box opens.

4. Click the **Upgrade** button. The **AdminStudio Product Activation** dialog box opens, prompting you to enter the activation code of the edition that you want to upgrade to.



5. Enter the activation code of the edition you purchased and click the **Activate** button. After a few seconds, you will receive a message that activation was successful. The functionality of the upgraded edition is immediately available to you.

7

Evaluating AdminStudio

If you want to try out AdminStudio prior to making your purchasing decision, you can evaluate it prior to activation: The trial period available to you varies by Edition:

Table 7-1 • Evaluation Periods Per Edition

Edition	Evaluation Period
AdminStudio Standard, Professional, Enterprise Editions	21 days
AdminStudio ZENworks Limited Edition	60 days
AdminStudio Limited Edition for LANdesk Management Suite	45 days

In evaluation mode, you have the functionality of the AdminStudio Enterprise Edition client tools available to you.

This chapter includes the following topics:

- [Evaluating AdminStudio Enterprise Edition Client Tools](#)
 - [AdminStudio 2018 Evaluation Restrictions](#)
 - [Evaluating AdminStudio's Microsoft App-V Support](#)
 - [Evaluating the Automated Application Converter "Multiple Application" Option](#)
- [Activating AdminStudio After Evaluation Period](#)

Evaluating AdminStudio Enterprise Edition Client Tools

In evaluation mode, you have the functionality of the AdminStudio Enterprise Edition client tools available to you.

If you have not purchased a license for AdminStudio, you can still install AdminStudio and use it for a limited number of days without performing activation code verification. When you run AdminStudio in this trial mode, all of its features are fully available. The dialog box that AdminStudio displays whenever you launch AdminStudio in trial mode shows you how many days are left in your trial period.

If you do not verify AdminStudio within the trial period, AdminStudio will stop working when the trial period has ended. You can perform activation code verification at any time before or after the trial period has ended.

To evaluate the Enterprise Edition client tools, perform the following steps.



Task

To evaluate the AdminStudio Enterprise Edition client tools:

1. Install AdminStudio.
2. Launch AdminStudio. A dialog box opens, stating that you are using a time-limited trial version.
3. If you want to evaluate AdminStudio, select **Continue to Evaluate AdminStudio** and click **Next** (or just wait ten seconds). The product will launch.
 - When you run AdminStudio in this trial mode, all of its features are fully available.
 - Each time you open AdminStudio while you are in evaluation mode, this dialog box shows you how many days are left in your trial period.
4. If you have five or fewer days left in your trial period, the dialog box remains open, requiring you to click before you can proceed. Do one of the following:
 - a. If your trial period is not over, you can continue to use AdminStudio by selecting the **Continue to Evaluate AdminStudio** option and clicking **Next**.
 - b. If you have already purchased a activation code or want to purchase one online, select **Activate or Purchase AdminStudio** and click **Next**.
5. When the evaluation period expires, you could then activate AdminStudio by following the steps in [Activating AdminStudio After Evaluation Period](#).



Note • For additional information on evaluating the AdminStudio Limited Edition for LANDesk Management Suite, see [Evaluating the Client Tools in the Limited Edition for LANDesk Management Suite](#).

AdminStudio 2018 Evaluation Restrictions

When you run AdminStudio in trial/evaluation mode, all of the features in the AdminStudio Enterprise Edition client tools are fully available, with the following restrictions:

- **Can create only one Application Catalog**—You are permitted to create only one Application Catalog, and it must be named AdminStudio Evaluation Catalog.
- **Ten package import limit**—Only 10 total packages (of one or more deployment types) can be imported into the Application Catalog.
- **Package deletion not permitted**—After you import a package into the Application Catalog, you are not permitted to delete it.
- **AdminStudio Platform API support is disabled**—All platform support is disabled.

Evaluating AdminStudio’s Microsoft App-V Support

While evaluating the AdminStudio Enterprise Edition client tools, you will be able to convert a Windows Installer package to an App-V application using the Automated Application Converter, Repackager, and the InstallShield App-V Assistant. However, an App-V application built using an evaluation version of AdminStudio will display the following message every time it is launched:

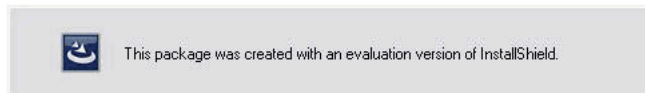


Figure 7-1: Evaluation Version Message

After activating AdminStudio, you will be able to remove this message by rebuilding the App-V application.

Evaluating the Automated Application Converter “Multiple Application” Option

The “multiple application” option of Automated Application Converter and the Conversion Wizard is only available when you purchase AdminStudio Enterprise Edition.



Note • With AdminStudio Standard or Professional Editions, you will only be able to convert one package at a time, using one virtual machine.

When using an evaluation version of AdminStudio, you will be able to use Automated Application Converter or Conversion Wizard to convert a directory full of Windows Installer packages into individual virtual packages, but the conversion will be limited to three packages per run, using only one virtual machine. Therefore, only the first three packages that Automated Application Converter encounters will be converted to virtual applications.

Evaluating the Client Tools in the Limited Edition for LANDesk Management Suite

There are several additional guidelines that are followed when evaluating the AdminStudio client tools in the Limited Edition for LANDesk Management Suite:

- [AdminStudio Client Tools Available During Evaluation: Typical or Custom](#)
- [Server Connection Not Required During Evaluation Period](#)

AdminStudio Client Tools Available During Evaluation: Typical or Custom

The tools available to you during the evaluation period depends upon the selection you made on the **Setup Type** panel of the AdminStudio Limited Edition for LANDesk Management Suite installation:

The choice that you make on the **Setup Type** panel affects the tools that are available to you if you choose to evaluate the product:

- **Typical**—If you choose this option, only the tools included in this Limited Edition are installed. Therefore, during the evaluation period, only those tools are available.
- **Complete**—If you choose this option, all of the AdminStudio Enterprise Edition client tools are installed. This enables you to evaluate all of these tools during your 45-day evaluation period. After the evaluation period ends and you enter your AdminStudio Limited Edition for LANDesk Management Suite activation code, only those tools included in the Limited Edition will be available to you.

Server Connection Not Required During Evaluation Period

After you activate AdminStudio Limited Edition for LANDesk Management Suite, it can only be used when the LANDesk Management Suite is already installed. However, in evaluation mode, there is no LANDesk Management Suite Server connection requirement.

Activating AdminStudio After Evaluation Period

If you chose the evaluation option when you opened AdminStudio for the first time and now you want to purchase an AdminStudio Edition and activate it, perform the following steps.



Task *Activating AdminStudio after using it in Evaluation mode:*

1. Contact AdminStudio Sales and purchase a activation code for an edition of AdminStudio.
2. Launch AdminStudio. A dialog box opens, stating that you are using a time-limited trial version and listing the number of days left in your trial period.
3. Select **Activate or Purchase AdminStudio** and click **Next**. You are prompted to **Enter Your Activation Code**.
4. Enter the activation code of the edition you purchased and click the **Activate** button. After a few seconds, you will receive a message that activation was successful.

5. Click **Finish**. AdminStudio will launch.

Your product would then be fully activated and you would be able to use all of the tools that are included in the Edition of AdminStudio that you purchased.



Note • If you do not have a online connection, you can activate your product via a Web page. See [Activating Through a Web Page](#).

Index

A

- activation 41
 - about 42
 - of AdminStudio purchased from Flexera Software 42, 43
 - of AdminStudio purchased from reseller 42
 - offline 50
 - registering your product 42
 - silent 51
 - troubleshooting 49
 - upon initial startup 42
 - using Windows Installer properties 51
 - via a web page 50
- activation codes 42
- AdminStudio
 - about activation 42
 - activation 41, 43
 - activation codes 42
 - AdminStudio Shared directory 24, 37, 39
 - client tools installation 23, 37
 - client-only install 24
 - complete install 24
 - custom install 24
 - database server permissions 17
 - evaluating Enterprise Edition client tools 56
 - how to evaluate 55
 - installing 23, 37
 - installing IIS 18
 - minimum permissions 17
 - minimum privileges 17
 - reactivating on different computer 52
 - registering your product 42
 - running client tools installation 23
 - test drive 55
 - trial version 55

- upgrading 53
 - upgrading to Professional or Enterprise Edition 53
 - upgrading your product Edition 53
- AdminStudio 5.x
 - upgrading Application Catalog from 26
- AdminStudio 6.x
 - upgrading Application Catalog from 26
- AdminStudio 7.x
 - upgrading Application Catalog from 26
- AdminStudio Shared directory 24, 37, 39
- Application Catalog
 - upgrading the collation setting 35
- application catalogs
 - upgrading 26
- App-V applications
 - evaluating AdminStudio's App-V support 57

B

- batch convert option
 - evaluating 57

C

- collation setting 35

D

- database
 - collation setting 35
 - upgrading 26
- database collation setting 35

E

- evaluating
 - AdminStudio 55
 - AdminStudio's Microsoft App-V support 57
 - batch convert option 57

I

- IIS (Internet Information Services (IIS) 18
- installing
 - AdminStudio 23, 37
 - AdminStudio client tools 23
 - AdminStudio silently 25
 - reactivating AdminStudio on a different computer 52
 - specifying a transform during silent installation 25
 - specifying activation code during silent installation 25
 - specifying AdminStudio installation directory during silent installation 25
 - specifying AdminStudio Shared location during silent installation 25
 - specifying InstallShield Editor installation directory 25

L

- Latin1_General_CI_AS 35

O

- offline activation 50

P

- permissions
 - database server 17
 - minimum for AdminStudio 17

R

- reactivation
 - of AdminStudio on a different computer 52
- registration 42
 - offline 50
- reseller
 - activation of products from 42

S

- Setup Type panel 39
- silent activation 51
- silent installation 25
- SQL_Latin1_General_CP1_CI_AS 35
- system requirements

- hardware and software 7

T

- trial version
 - AdminStudio 55
- typical vs. complete installation 39

U

- upgrading
 - AdminStudio product Edition 53
 - Application Catalogs 26
 - collation setting of database 35
 - database 26

W

- watermark 57
- web page activation 50